

Histo-Line Laboratories



Innovative life science solutions



Pathology and
Laboratory

General Catalog
Reagents Consumables

English Version



Company



The **Histo-Line Laboratories** were founded in Milan in 1987.

We are a leading producer and distributor of products and instruments meant for diagnosis and research in: histology, cytology, immunohistochemistry, cellular biology, molecular biology, hematology, veterinary.

Our products' are conceived to satisfy a vast spectrum of human and veterinary research and diagnostic needs.

Our mission is to supply the best technological assistance to researchers in pursuit of excellence.

We supply a vast selection of products and systems, such as Antibodies, DNA probes, automatic and manual revelation systems, reagents and instruments for processing, staining and diagnosis of human and animal tissues.

In an effort to offer an even better service we have recently relocated in V.le Giuseppe di Vittorio, 30 Pantigliate.

We have expanded our previous structure and have created a Conference Center able to host up to 100 people.

We offer a variety of ECM courses as well as courses on the theoretical and practical aspects of the applications of differing methodologies.



Histo-Line Laboratories

Innovative life science solutions

**FIXATION**

Formalin and fixative	8
Decalcifying solutions	9
Pre-filled containers	9

PROCESSING

Solvents and dehydrating	12
Wax paraffin	12
Biopsy cassettes	13
Tissue cassettes	13
Mega & supermega cassettes	14
Base molds	14
Disposable molds	15
Protective biopsy pads	15
Cassettes accessories	15
Tissue marking dye	16
Heated forceps	16

CUTTING

Microtome blades	20
Microtome knife	21
Microtome accessories	21
Cryostat holders	22

STAINING

Microscope slide	26
Coverslips	26
Manual staining set	27
Staining dish and jar	27
Mounting media	29
Hematoxylin & eosin	30
Histology stains solutions	31
Cytology fixative and stains	34
Cytology stains solutions	35
Special stain kit	36

STORAGE

Modular storage system for paraffin block	58
Modular storage system for slides	59
Archives high capacity for blocks	60
Archives high capacity for slides	61

INDEX

Analytic index	64
----------------	----

Histo-Line Laboratories



Innovative life science solutions





**Formalin and fixative
Decalcifying solutions
Pre-filled containers**



FIXATION

Formalin and fixative

IVD CE



Histo-Line provide a full range of fixatives suitable for any requirements and types of specimen.

Product	Size	Packaging	Code
Histofix (Formalin 10% V/V) Primary fixative containing formaldehyde 10% V/V	Bottle	4 x 5 lt	DR001
	Tank	1 x 10 lt	DR002
	Tank	1 x 20 lt	DR003
Tap for tank For the tank 10 or 20 lt	Box	5 pcs	HL82076
Buffered formalin 4% (oxidometric title)	Bottle	20 x 1 lt	07-100
	Bottle	4 x 5 lt	07-101
	Tank	1 x 10 lt	07-102
	Tank	1 x 20 lt	07-104
Buffered formalin OsM certified	Tank	1 x 20 lt	07-103
Formalin Millioning Carson pH 7,2-7,4 For electron microscopy	Bottle	4 x 5 lt	07-107
Formalin acetate buffer	Bottle	4 x 5 lt	07-111
Formalin fosfate buffer	Bottle	4 x 5 lt	07-112
Fish zincate formalin	Bottle	4 x 5 lt	07-113
Formalin at sucrose	Bottle	4 x 5 lt	07-114
Substitute hydro alcoholic of Formalin	Bottle	4 x 5 lt	07-115
Bouin fixative For bone marrow biopsies	Bottle	6 x 500 ml	07-116
Bouin fixative concentrated solution For bone marrow biopsies	Bottle	6 x 1 lt	07-116-Z
Bouin Hollande fixative For hypophysis and endocrine pancreas	Bottle	6 x 500 ml	07-117
B5 fixative For hematopoietic tissue	Bottle	6 x 500 ml	07-119
Zamboni fixative Is commonly used in electron microscopy	Bottle	6 x 500 ml	07-120

Cytology fixative

IVD CE

See pag.34

FIXATION

Decalcifying solutions

IVD CE

Different solutions for biopsies and calcified tissues

Product	Size	Packaging	Code
Histo Decalc decalcifier Solution recommended for decalcifier any type of biopsies and calcified tissues	Bottle	6 x 1 lt	R0060
RCD fast decalcifying solution Solution recommended for rapid time of decalcifying	Bottle	6 x 1 lt	02-100
RDM middle decalcifying solution Solution recommended for medium time of decalcifying	Bottle	6 x 1 lt	02-101
RDO decalcifier for bone marrow biopsy Decalcifying solution recommended for bone marrow fragments with EDTA	Bottle	6 x 1 lt	02-102
RDP (Pasquini) for bone marrow biopsy Decalcifying solution with EDTA modified sec. Pasquini	Bottle	6 x 1 lt	02-103
RDF decalcifier with Fixative I^ Decalcifying-fixative for bone marrow biopsies	Bottle	6 x 1 lt	02-104
RDL decalcifier with Fixative II^ Slow action Decalcifying-fixative for bone marrow biopsies at slow action	Bottle	6 x 1 lt	02-105
RDB rapid decalcifier modified Decalcifying solution fast-acting modified	Bottle	6 x 1 lt	02-106

Pre-filled containers

IVD CE



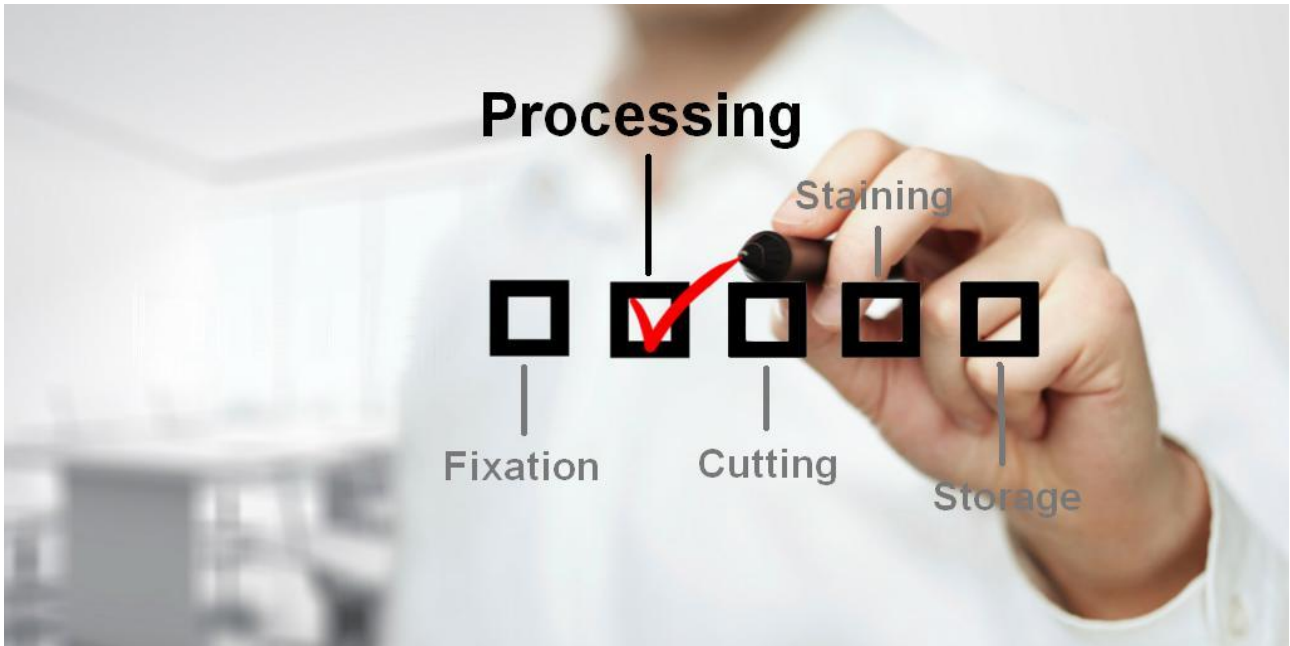
Container made according to UE normative pre-filled with formalin or other fixatives. Container are made in HDPE (high density polyethylene).

Product	Size	Packaging	Code
Formaldehyde 4 % pre-filled containers Polyethylene container screw cap	20 ml	224 pcs	07-124-2
	30 ml	150 pcs	07-124-3
	40 ml	150 pcs	07-124-4
	60 ml	90 pcs	07-124-6
	80 ml	75 pcs	07-124-8
	90 ml	75 pcs	07-124-9
	120 ml	40 pcs	07-124-12
	250 ml	90 pcs	07-124-25
	500 ml	50 pcs	07-124-5
	1 lt	20 pcs	07-124-1
Pre-filled containers (press-close lids) Polyethylene container with press-close lids	2 lt	60 pcs	07-143
	3 lt	60 pcs	07-144
	5 lt	48 pcs	07-145
	11 lt	24 pcs	07-147

Histo-Line Laboratories

Innovative life science solutions





- Solvents**
- Wax paraffin**
- Biopty cassettes**
- Tissue cassettes**
- Mega & supermega cassettes**
- Base molds**
- Disposable molds**
- Protective biopsy pads**
- Tissue marking dye**
- Cassettes accessories**
- Heated forceps**

PROCESSING

Solvents and dehydrating

IVD CE

All type of solvents for the tissue processing, designed for anatomic pathology procedures.

Product	Size	Packaging	Code
Citro HistoClear Substitute of xylene, D- limonene based	Bottle	4 x 5 lt	R0050 CITRO
	Bottle	4 x 2,5 lt	R0050/2500 CITRO
Diaphane Non-toxic substitute of xylene, isoparaffin-based, for histology and cytology	Bottle	4 x 2,5 lt	R0055/2.5
	Bottle	4 x 5 lt	R0055/20
Histo - Alcohol 95% Alcohol mixture, ethanol-based, for histology and cytology	Bottle	4 x 5 lt	R0095
Histo - Alcohol 99% Alcohol mixture, ethanol-based, for histology and cytology	Bottle	4 x 5 lt	R0099
Xylene Xylene for cytology and histology	Bottle	4 x 5 lt	3410
	Bottle	4 x 2,5 lt	3410/2500

Wax paraffin

IVD CE



High quality paraffin-plastic polymer mixtures. Excellent penetration into any tissue types and proper elasticity during cutting, for any type of tissue sections. DMSO (dimethyl sulfoxide) free. Is in white drops, translucent, odorless, stable and easy to handle.

Product	Size	Packaging	Code
Lab-O-Wax 56-58°C Pellet form Melting Point 56-58°C	Bag	6 x 2 kg	R0040S
	Sac	1 x 20 kg	R0040/20
Lab-O-Wax Plus 56-58°C Paraffin high quality in pellet form. Melting Point 56-58°C	Bag	6 x 2 kg	R0040 PLUS
Lab-O-Wax 52-54°C Pellet form Melting Point 52-54°C	Bag	6 x 2 kg	R0042
Amethyst Paraffin Paraffin of amethyst color for special section for high contrast. Melting Point 56-58°C	Bag	4 x 2 kg	24366-1
Citrine Paraffin Paraffin of citrine color for special section for high contrast. Melting Point 56-58°C	Bag	4 x 2 kg	24363-1
Emerald Paraffin Paraffin of emerald color for special section for high contrast. Melting Point 56-58°C	Bag	4 x 2 kg	24364-1
Opal Paraffin Paraffin of opal color for special section for high contrast. Melting Point 56-58°C	Bag	4 x 2 kg	24365-1
Pink Sapphire Paraffin Paraffin of pink color for special section for high contrast. Melting Point 56-58°C	Bag	4 x 2 kg	24361-1

PROCESSING

Biopty cassettes

IVD CE



Acetal resin embedding cassettes, in high quality material, equipped with a double locking system to ensure a perfect seal during tissue processing. For processing and embedding small specimens (biopsies).

Product	Size	Packaging	Code
Biopty Cassette White For processing and embedding of small specimens (biopsies)	Box	1000 pcs	R4172
Biopty Cassette Yellow For processing and embedding of small specimens (biopsies)	Box	1000 pcs	R4001
Biopty Cassette Pink For processing and embedding of small specimens (biopsies)	Box	1000 pcs	R4002
Biopty Cassette Green For processing and embedding of small specimens (biopsies)	Box	1000 pcs	R4003
Biopty Cassette Blu For processing and embedding of small specimens (biopsies)	Box	1000 pcs	R4004
Biopty Cassette Gray For processing and embedding of small specimens (biopsies)	Box	1000 pcs	R4005

Tissue cassettes

IVD CE



Acetal resin embedding cassettes, in high quality material, equipped with a double locking system to ensure a perfect seal during tissue processing. For processing and embedding of medium-large specimens.

Product	Size	Packaging	Code
Mono Cassette Yellow For processing and embedding of medium-large specimens	Box	1000 pcs	R4154
Mono Cassette Pink For processing and embedding of medium-large specimens	Box	1000 pcs	R4155
Mono Cassette Green For processing and embedding of medium-large specimens	Box	1000 pcs	R4156
Mono Cassette Blue For processing and embedding of medium-large specimens	Box	1000 pcs	R4157
Mono Cassette Red For processing and embedding of medium-large specimens	Box	1000 pcs	R4159
Mono Cassette White For processing and embedding of medium-large specimens	Box	1000 pcs	R4170

PROCESSING

Mega & supermega cassettes

IVD CE



Acetal resin embedding cassettes, in high quality material, equipped with a double locking system to ensure a perfect seal during tissue processing. For processing and embedding of large specimens.

Product	Size	Packaging	Code
Mega Cassette White For processing and embedding large specimens	Box	1000 pcs	R4173
Super Mega Cassette White For processing and embedding of macro sections	Box	100 pcs	R4173 Mega

Base molds

IVD CE



Stainless steel moulds for paraffin embedding of histological specimens. Wide range of available sizes. Reusable.

Product	Size	Packaging	Code
Base Molds 7x7x5 mm	Box	12 pcs	R4161
Base Molds 15x15x5 mm	Box	12 pcs	R4162
Base Molds 24x24x5 mm	Box	12 pcs	R4163
Base Molds 30x24x5 mm	Box	12 pcs	R4164
Base Molds 37x24x5 mm	Box	12 pcs	R4165
Base Molds 37x24x12 mm	Box	12 pcs	R4166



Disposable molds

IVD CE

Plastic moulds for paraffin embedding of histological specimens. They can be discarded after use, yet strong enough to be reused.



Product	Size	Packaging	Code
Disposable Molds 7x7x6 mm	Box	500 pcs	R2780P
Disposable Molds 15x15x6 mm	Box	500 pcs	R2781P
Disposable Molds 24x24x6 mm	Box	500 pcs	R2782P
Disposable Molds 30x24x6 mm	Box	500 pcs	R2783P
Disposable Molds 37x24x6 mm	Box	500 pcs	R2784P
Disposable Molds for mega cassettes	Box	100 pcs	R2882P
Disposable Molds for supermega cassettes	Box	50 pcs	R2785P

Protective biopsy pads

IVD CE

Use Biopsy Pads to hold small biopsies in place during processing and for storage when using tissue cassettes. Medium blue color enhances tissue visibility. Pad is compatible with all histology solvents.



Product	Size	Packaging	Code
Biopsy Pads Blu	Bag	500 pcs	RBPB
Biopsy Pads White	Bag	500 pcs	RBPW

Cassettes accessories

IVD CE

Accessories for to write on cassettes or slides.



Product	Size	Packaging	Code
Super Pap Pen (fine tip) Marking pen for histological and cytological specimens, ideal for immunohistochemistry, at 5 mm	pcs	1 pc	10-0045
Mini Pap Pen It spreads a water repellent waxy film on the slide, to limit the staining area at 2 mm	pcs	1 pc	LP0002
Securline Marker II (Black) Special permanent markers: they do not discolor during processing, guaranteeing perfect specimen identification	Box	10 pcs	R1451



PROCESSING

Tissue marking dye

IVD CE

Dyes used for marking the margins of excised surgical specimens or processing different specimens in a single embedding cassette, both fresh and fixed in formalin, both fresh and fixed in formalin. Available in 7 colors.



Product	Size	Packaging	Code
Tissue marking dyes kit (Seven color) Complete set with 7 bottles of 100 ml in a handy rack: green, yellow, red, blue, orange, violet and black	Kit	7 x 100 ml	26-000
Tissue marking dyes black	Bottle	100 ml	26-100
Tissue marking dyes blue	Bottle	100 ml	26-101
Tissue marking dyes red	Bottle	100 ml	26-102
Tissue marking dyes green	Bottle	100 ml	26-103
Tissue marking dyes yellow	Bottle	100 ml	26-104
Tissue marking dyes orange	Bottle	100 ml	26-105
Tissue marking dyes violet	Bottle	100 ml	26-106

Heated forceps

IVD CE



Forceps with electronic temperature control for specimen embedding. This device is preset for operation with two simultaneously heated forceps.

Product	Size	Packaging	Code
Histo Clip	Unit	1 pc	HL2043
Heated forceps 1 mm	Unit	1 pc	HL4041
Heated forceps 2 mm	Unit	1 pc	HL4042
Heated forceps 4 mm	Unit	1 pc	HL4043

PROCESSING

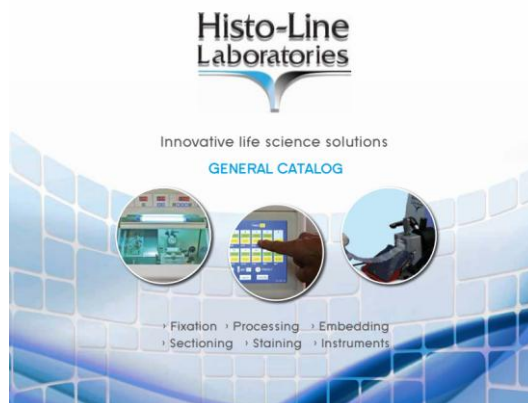


Want more information?

If you need instruments for the processing refer to the catalog Histo-Line Instruments. You can find the complete list of the tissue processor and special accessories that can help you.



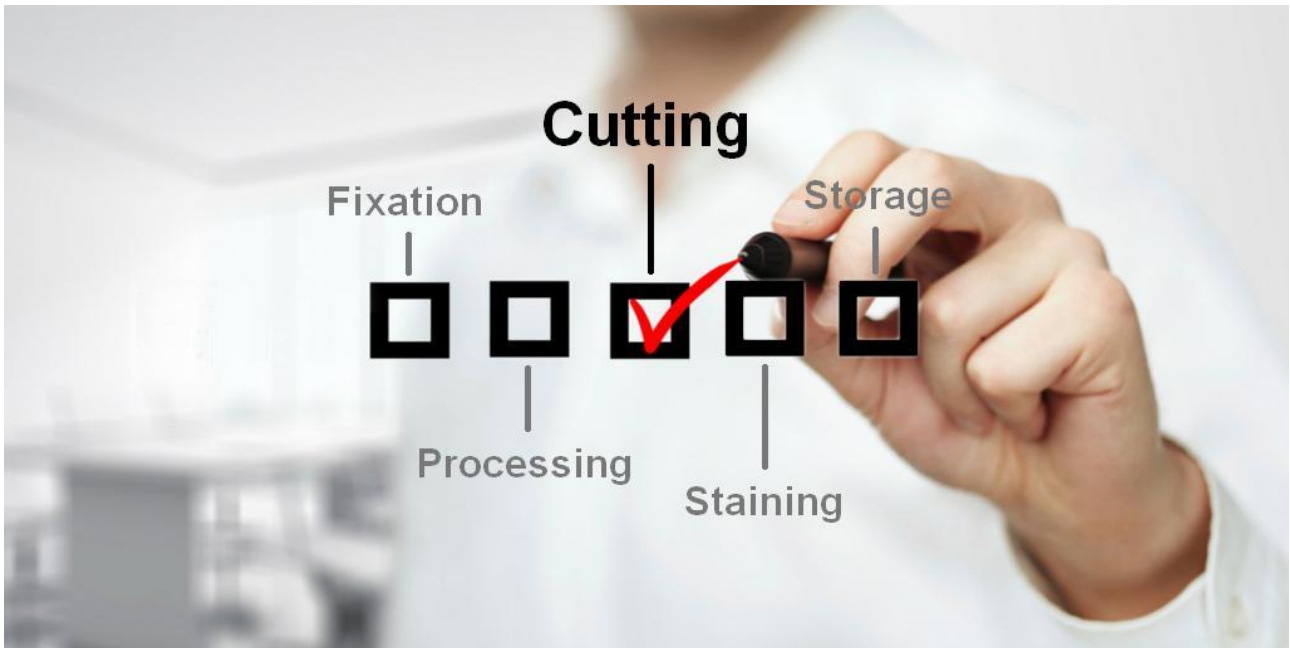
Want to see all the available instruments? Look it in the instruments catalog or on the website



Histo-Line Laboratories

Innovative life science solutions





Microtome blades
Microtome knife
Microtome accessories
Cryostat holders

CUTTING

Microtome blades

IVD CE



Microtome disposable blades which are aimed to section the specimens at certain stable thickness require technical expertise such as sophisticated heating process, excellent polishing and coating techniques.

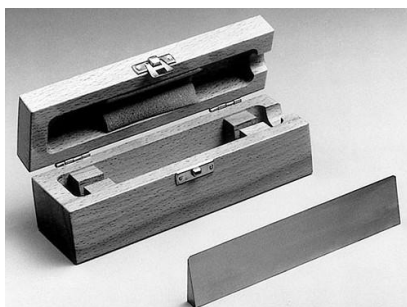
It is also required to maintain the high quality under precise controls with inspection instruments.

Product	Size	Packaging	Code
Histo blade LPH35 Low profile blade with increased durability	Box	50 pcs	R43351
Histo blade LP35S Low profile blade with increased sharpness	Box	50 pcs	R43361
Histo blade HP35S High profile blade with balance of sharpness and durability	Box	50 pcs	R43371
Histo blade Type 26 Excellent sharpness for soft tissues (Low Profile)	Box	50 pcs	R43301
Histo blade Type 42 Excellent durability for hard tissues (Low Profile)	Box	50 pcs	R43303
Histo blade Type 52 Excellent balance of sharpness and durability for hard tissues (Low Profile)	Box	50 pcs	R43304
Histo blade Type 67 Excellent sharpness for thinner sectioning (Low Profile)	Box	50 pcs	R43307
Histo blade Type 69 Excellent sharpness for both hard and soft tissues (Low Profile)	Box	50 pcs	R43308
Histo blade Type 70HP Excellent for cryo-sectioning with wide and thick blade (High Profile)	Box	50 pcs	R43341
Histo blade Type 80LA (22°) Excellent for ultra-thin sectioning such as for the kidney and the lymph node (Low Angle)	Box	50 pcs	R43311
Histo blade NH35 Particularly suitable for hard tissues	Box	50 pcs	R4692
Histo blade S22 For extra-thin sectioning and very soft tissue	Box	50 pcs	R4693
Histo blade S35L For large tissue blocks and routine sectioning	Box	20 pcs	R4697
Blade for Microtome Super Histo-Line S35 Standard blade for routine practice and biopsies	Box	50 pcs	HLS35
Trimming Blade 130mm Blades with covers, fast, easy blade change	Box	10 pcs	R0130

CUTTING

Microtome knife

IVD CE



Reusable knives for use with microtomes and cryostats. Wide selection available including a variety of knife angles and materials, for routine sectioning, sectioning of hard tissues and for materials embedded in Epoxy resin, MMA or GMA specimens.

Product	Size	Packaging	Code
Microtome Stainless Steel Knife Cm 12 Reusable knives for use with microtomes and cryostats	Box	1 pc	R8612
Microtome Stainless Steel Knife Cm 16 Reusable knives for use with microtomes and cryostats	Box	1 pc	R8618
Stainless Steel Knife	Box	1 pc	SK120
TC Knife Blade D profile Cm 12 Tungsten carbide knife	Box	1 pc	22-126

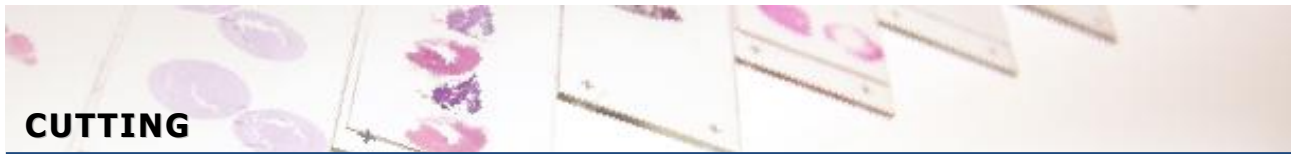
Microtome accessories

IVD CE



A line of products useful for the embedding of the specimen to the cryostat, oils for microtomy and detergents for the cleaning of the instruments.

Product	Size	Packaging	Code
Ice Spray Freezing spray for histology purposes: quickly freezes the tissue to be sectioned by cryostat	Bottle	12 x 150 ml	R0020
Microtome cleaning spray Spray solution, for cleaning microtomes, from paraffin residues	Bottle	10 x 150 ml	22-135
Microtome oil Microtome lubricant	Bottle	10 x 100 ml	22-124
Spray disinfectant for cryostat	Bottle	4 x 250 ml	22-126
O.C.T. Compound (Embedding for cryostat sectioning) Embedding medium for cryostat sectioning	Bottle	12 x 125 ml	R0030
Brushes set for cryostat Brushes for cryostat	Box	6 pcs	22-119



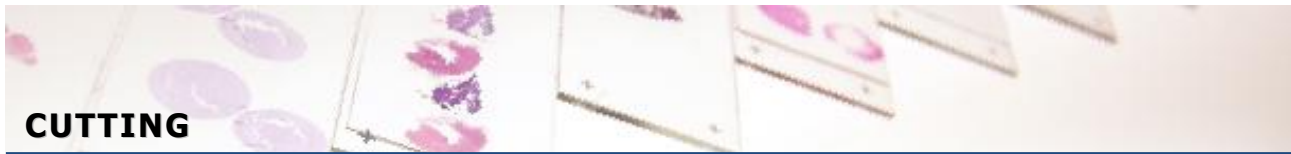
Cryostat holders

IVD CE



Specimen object discs for Histo-Line cryostats and Leica compatible, circular discs with outer O-ring for easy of different diameter in circular embossed ring.
For use on all frozen specimens.

Product	Size	Packaging	Code
Disc of 25,3 mm Ø Circular discs compatible for cryostat Histo-Line MC3000-MC4000	Box	5 pcs	MC253
Disc of 30,7 mm Ø Circular discs compatible for cryostat Histo-Line MC3000-MC4000	Box	5 pcs	MC307
Disc of 20 mm Ø Circular discs compatible for cryostat Histo-Line MC5000-MC5050	Box	5 pcs	MC200
Disc of 25 mm Ø Circular discs compatible for cryostat Histo-Line MC5000-MC5050	Box	5 pcs	MC250
Disc of 26,7 mm Ø Circular discs compatible for cryostat Histo-Line MC5000-MC5050	Box	5 pcs	MC267
Disc of 30 mm Ø Circular discs compatible for cryostat Histo-Line MC5000-MC5050	Box	5 pcs	MC300
Disc of 40 mm Ø Circular discs compatible for cryostat Histo-Line MC5000-MC5050	Box	5 pcs	MC400
Disc of 50 mm Ø Circular discs compatible for cryostat Histo-Line MC5000-MC5050	Box	5 pcs	MC500



CUTTING



Want more information?

If you need instruments for cutting section refer to the catalog Histo-Line Instruments. You can find the complete list of the microtomes, cryostats and special accessories that can help you.



Want to see all the available instruments? Look it in the instruments catalog or on the website



CUTTING

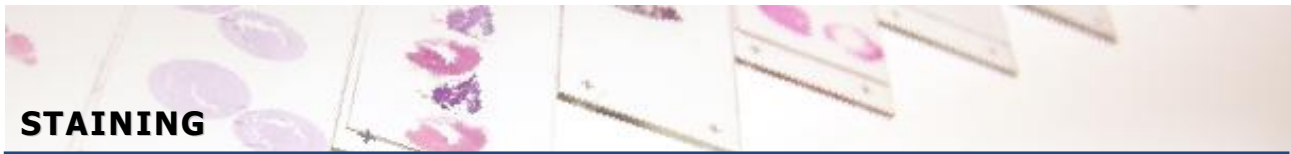
Histo-Line Laboratories

Innovative life science solutions



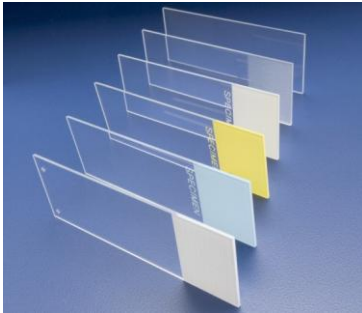


- Microscope slide**
- Coverslips**
- Manual staining set**
- Staining dish and jar**
- Mounting media**
- Hematoxylin & eosin**
- Histology stains solutions**
- Cytology fixative and stains**
- Cytology stains solutions**
- Special stain kit**



Microscope Slides

IVD CE



Microscope slides are available in standard sizes: 1,0 mm thick in dimensions of 26 x 76 mm (ISO Norm 8037/I) microscope slides are manufactured from extra white glass.

Product	Size	Packaging	Code
Microscope slides standard Dimensions: 26x76x1 mm	Box	1000 pcs	HL26761
Microscope slides sandblasted Dimensions: 26x76x1 mm	Box	1000 pcs	HL26762
Microscope slides ground edges Dimensions: 26x76x1 mm	Box	1000 pcs	HL26763
Microscope slides one end, double frosted ground edges Dimensions: 26x76x1 mm	Box	1000 pcs	HL26764
Polylysine slides Menzel Adhesion is guaranteed by a chemical coating. Dimensions: 26x76x1 mm	Box	72 pcs	HL26765
Microscope slides Super Frost Menzel positive charged Positively charged. Dimensions: 26x76x1 mm	Box	72 pcs	HL26766
Microscope slides Super Frost White marking area Positively charged. Dimensions: 26x76x1 mm	Box	1000 pcs	HL26767
Microscope slides Super Frost Yellow marking area Positively charged. Dimensions: 26x76x1 mm	Box	1000 pcs	HL26768

Coverslips

IVD CE

Product	Size	Packaging	Code
Histology Coverslips 15x15mm Coverslips for microscopy. Thickness: 0.13 - 0.16 mm	Box	1000 pcs	HL1515
Histology Coverslips 18x18mm Coverslips for microscopy. Thickness: 0.13 - 0.16 mm	Box	1000 pcs	HL1818
Histology Coverslips 18x24mm Coverslips for microscopy. Thickness: 0.13 - 0.16 mm	Box	1000 pcs	HL1824
Histology Coverslips 20x20mm Coverslips for microscopy. Thickness: 0.13 - 0.16 mm	Box	1000 pcs	HL2020
Histology Coverslips 21x26mm Coverslips for microscopy. Thickness: 0.13 - 0.16 mm	Box	1000 pcs	HL2126
Histology Coverslips 22x22mm Coverslips for microscopy. Thickness: 0.13 - 0.16 mm	Box	1000 pcs	HL2222
Histology Coverslips 24x24mm Coverslips for microscopy. Thickness: 0.13 - 0.16 mm	Box	1000 pcs	HL2424
Histology Coverslips 24x32mm Coverslips for microscopy. Thickness: 0.13 - 0.16 mm	Box	1000 pcs	HL2432
Histology Coverslips 24x36mm Coverslips for microscopy. Thickness: 0.13 - 0.16 mm	Box	1000 pcs	HL2436
Histology Coverslips 24x40mm Coverslips for microscopy. Thickness: 0.13 - 0.16 mm	Box	1000 pcs	HL2440
Histology Coverslips 24x50mm Coverslips for microscopy. Thickness: 0.13 - 0.16 mm	Box	1000 pcs	HL2450
Histology Coverslips 24x60mm Coverslips for microscopy. Thickness: 0.13 - 0.16 mm	Box	1000 pcs	HL2460



Manual staining set

IVD CE



Manual system for staining histology and cytology staining process compact. Basket and tanks are resistant to solvents and to high temperature (up to 170°C), and can be used in microwave ovens.

Product	Size	Packaging	Code
Histology Set Rack complete with 12 tanks and slide holder basket	Unit	1 rack	HL1224
Plastic spare 12 tanks	Box	12 tanks	HL1212
Plastic spare handle	Box	6 handle	HL0606

Staining dish

IVD CE



Tray slide holder without internal channels complete with lid. Baskets that can hold 10 places in glass and stainless steel or made of transparent TPX (polymethylpentene, PMP) with folding handle to 20 seats.

Product	Size	Packaging	Code
Staining dish made of glass Staining dish for 20 slides	Box	10 pcs	01.4060.00
Glass slide holder basket to 10 slides	Box	1 pc	01.4063.00
Handle stainless steel basket glass slide rack 10 slides	Box	1 pc	01.4065.00
Slide holder basket in stainless steel with a long handle For 20 slides	Box	1 pc	04.4270.27
Basket with handle in PMP For staining 20 slides	Box	10 pcs	06.0354.00
Staining dish made in PMP Accompanied by two lids: one to total closure and one with a slit for the insertion of the basket during the colorations for 20 slides	Box	1 pc	06.0353.00



Schifferdecker staining dish

IVD CE



Tray for staining in glass or in TPX (polymethylpentene, PMP) with 10 seats, can hold up to 20 microscope slides horizontally back to back slide. Equipped with lid.

Product	Size	Packaging	Code
Schifferdecker staining dish made of glass Rack complete equipped with glass lid, size 26x76 mm	Box	4 pcs	01.4050.00
Schifferdecker staining dish made of TPX Rack complete equipped with lid, size 85x70x50 mm	Box	4 pcs	06.0351.00

Hellendhal staining jar

IVD CE



Tray for for staining in glass or in TPX (polymethylpentene, PMP) with 8 grooves, may contain up to 16 slides vertically, back to back, with dimensions 26x76 mm.

Product	Size	Packaging	Code
Hellendhal staining dish made of glass Rack complete equipped with glass lid, size 26x76 mm	Box	4 pcs	01.4040.00
Hellendhal staining dish made of TPX Rack complete equipped with lid, external size 58x53,5x86 mm	Box	4 pcs	06.0355.00



Coplin staining jar

IVD CE



Tank glass, Wheaton original, for staining that can contain up to 10 microscope slides with dimensions of 25x75 mm, dimensioned so that the slides protrude and can be manipulated without the aid of forceps. The lid screw reduces evaporation of the reagents. The tray has a rectangular base and can hold about 55 ml of reagent.

Product	Size	Packaging	Code
Coplin staining jar with lid in glass Complete equipped with glass lid, size 26x75 mm, capacity 65ml	Box	6 pcs	01.4070.00
Coplin staining jar with lid in PP Complete equipped with PP lid, size 26x26x70 mm, capacity 55ml	Box	6 pcs	01.4075.00
Coplin staining jar with lid in PP for TLC Complete equipped with PP lid, size 26x26x90 mm, capacity 60ml, for TLC chromatography	Box	6 pcs	01.4075.00

Mounting media

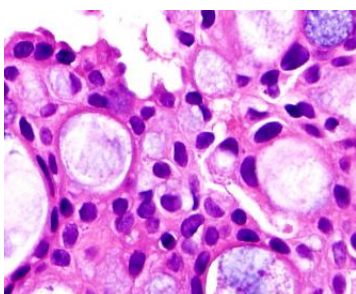
IVD CE

Product	Size	Packaging	Code
Pertex Mounting medium, dissolved in xylene	Bottle	3 x 1 lt	R0080
	Bottle	6 x 500 ml	R0081
Microcover Permout Mounting medium for slides, xylene free	Bottle	1 x 500 ml	3901
	Bottle	1 x 100 ml	3901/100
Albumine glycerinated Mounting medium for enzyme histochemical staining	Bottle	1 x 100 ml	04-109
Immersion oil for microscopy Oil for microscope	Bottle	10 pcs	22-123

STAINING

Hematoxylin & eosin

IVD CE



Optimal quality, high reproducibility; all solutions are stable and guarantee excellent cell details.

Product	Size	Packaging	Code
Harris Hematoxylin High concentration of Hematoxylin	Bottle	6 x 500 ml	09-182
Harris Hematoxylin GB modified for histology High concentration of Hematoxylin modified	Bottle	6 x 500 ml	09-180
Harris Hematoxylin AB for Bouin sections High concentration of Hematoxylin for tissue fixed in Bouin	Bottle	6 x 500 ml	09-183
Hematoxylin Anderson Nuclear stain	Bottle	6 x 500 ml	09-184
Hematoxylin Heidenhain (ferric) For cellular	Bottle	6 x 500 ml	09-189
Hematoxylin Phosphotungstic - P.T.A.H Reagent for detection of neuroglia and muscular tissue	Bottle	6 x 500 ml	09-204
Hematoxylin Delafield Specific for vegetal tissue	Bottle	6 x 500 ml	09-177
Hematoxylin Ehrlich	Bottle	6 x 500 ml	09-139
Hematoxylin Gill II Nuclear stain	Bottle	6 x 500 ml	09-178-2
Hematoxylin Gill modified Nuclear stain	Bottle	6 x 500 ml	09-178
Hematoxylin Weigert	Bottle	6 x 500 ml	09-201
Weigert A Hematoxylin (ferric) For trichrome stains	Bottle	6 x 500 ml	09-202
Weigert B Hematoxylin (ferric) For trichrome stains	Bottle	6 x 500 ml	09-203
Carazzi hemalum Low concentration of Hematoxylin	Bottle	6 x 500 ml	09-146
Eosin Y alcoholic solution ready to use For cytoplasm staining	Bottle	6 x 1 lt	R0190
Eosin Y alcoholic stock solution For cytoplasm staining	Bottle	6 x 250 ml	09-210
Eosin floxin alcoholic stock solution For cytoplasm staining	Bottle	6 x 250 ml	09-211
Eosin Y water solution 1% For cytoplasm staining	Bottle	6 x 1 lt	R0200
Eosin Y water solution 1% (acidified) For cytoplasm staining	Bottle	6 x 1 lt	09-213
Eosin orange solution stock solution For cytoplasm staining	Bottle	6 x 500 ml	09-217
Purified eosin alcoholic solution For cytoplasm staining	Bottle	6 x 1 lt	09-214

STAINING

Histology stains solutions

IVD CE

Product	Size	Packaging	Code
Aflog solution	Bottle	6 x 1 lt	09-100
Amman's lactophenol solutions	Bottle	6 x 1 lt	09-101
Albert stain	Bottle	6 x 1 lt	09-102
Armand stainig solution	Bottle	6 x 1 lt	09-104
Alcian Blue pH 1 Mowry Stain for mucins	Bottle	6 x 500 ml	09-106
Alcian Blue pH 2,5 Mowry Stain for mucins	Bottle	6 x 500 ml	09-107
Alizarine S red	Bottle	6 x 250 ml	09-285
Aniline blue Masson For collagen, mucus, basophil granules of hypophysis and delta cells granules of hypophysis	Bottle	6 x 500 ml	09-108
Aniline blue - Orange G Heidenhain Polychrome solution for Azan trichrome staining	Bottle	6 x 500 ml	09-109
Aniline Blue - Orange G Mallory For a selective collagen staining by aniline blue and for evidencing cytoplasm by Orange G	Bottle	6 x 500 ml	09-110
Blue astra pH 2,5 Stain for mucins	Bottle	6 x 500 ml	09-111
Blue unna solution	Bottle	6 x 500 ml	09-114
Blue bromophenol solution	Bottle	6 x 500 ml	09-115
Blue bromophenol indicator	Bottle	6 x 500 ml	09-119
Blue lactophenol For detection of fungi	Bottle	6 x 500 ml	09-120
Blue cresyl brillant	Bottle	6 x 500 ml	09-121
Blue methylene solution 15 Counterstain used in the Ziehl Neelsen method	Bottle	6 x 500 ml	09-122
Blue methylene Mallory Nuclear stain	Bottle	6 x 500 ml	09-123
Blue trypan water solution	Bottle	6 x 500 ml	09-124
Blue toluidine polychrome Polychrome acidophilus stain	Bottle	6 x 500 ml	09-125
Bromothymol blue phenicated solution	Bottle	6 x 500 ml	09-112
Carmine allum solution For chromosome staining	Bottle	6 x 500 ml	09-127
Cresyl violet Kluwer Barrera For evidencing neurons and glial nuclei	Bottle	6 x 500 ml	09-134
Cresyl violet according to Moore For staining of sexual chromatin	Bottle	6 x 500 ml	09-135
Cresyl violet according to Gram For Gram-positive bacteria	Bottle	6 x 500 ml	09-136
Cresyl violet metachromatic Stain for amyloid	Bottle	6 x 500 ml	09-137
Cresyl violet oxalate Gram Hucker	Bottle	6 x 500 ml	09-138
Cloralio hematoxylin	Bottle	6 x 500 ml	09-176

STAINING

Histology stains solutions

IVD CE

Product	Size	Packaging	Code
Degommier auramine phenicated Decolorizing solution	Bottle	6 x 500 ml	09-139
Degommier decolorized Decolorizing solution	Bottle	6 x 500 ml	09-140
Erythrosine orange Dominici For cytoplasm and connective staining	Bottle	6 x 250 ml	09-218
Erythrosine B solution For cytoplasm and connective staining	Bottle	6 x 250 ml	09-219
Floxina B Gram Stain for bacteria acc. to Gram staining protocol	Bottle	6 x 250 ml	09-221
Fuch sine paraldehyde Gridley For evidencing fungi	Bottle	6 x 250 ml	09-223
Fuch sine ponceau Masson For cytoplasm, keratin, muscle fibers	Bottle	6 x 250 ml	09-224
Fuch sine Ziehl Neelsen solution For evidencing of acid resistant bacteria	Bottle	6 x 1 lt	09-226
Geimsa R stock solution	Bottle	6 x 500 ml	09-230
Geimsa L stock solution	Bottle	6 x 250 ml	09-231
Gram basic fuch sine	Bottle	6 x 500 ml	09-236
Gram safranine Contrast for Gram staining	Bottle	6 x 500 ml	09-238
Gram gentian violet phenicated solution Decolorizing solution	Bottle	6 x 500 ml	09-239
Gram-Hucker (Hucker oxalate violet crystal) Decolorizing solution	Bottle	6 x 250 ml	09-240
Green bromocresol in ethanol	Bottle	6 x 500 ml	09-307
Gentian violet phenicated solution	Bottle	6 x 1 lt	09-313
Kuhne solution (methylene Blue phenicated)	Bottle	6 x 250 ml	09-245
Yellow methyl	Bottle	6 x 250 ml	09-227
Leishman stain	Bottle	6 x 250 ml	09-246
Light green Goldner For collagen, basophil granules of hypophysis and delta cells of hypophysis	Bottle	6 x 250 ml	09-308
Light green Grocott Used as background stain in the Grocott method	Bottle	6 x 250 ml	09-309
Luxol fast Blue	Bottle	6 x 250 ml	09-247
Laveran's (panchrome)	Bottle	6 x 250 ml	09-248
Mayer carmallum Nuclear stain	Bottle	6 x 500 ml	09-126
Mayer haemalum Medium intensity stain	Bottle	6 x 500 ml	09-175
Mayer whit phenolphthalein	Bottle	6 x 500 ml	09-253
May-Grunwald (Blue methylene eosin)	Bottle	6 x 1 lt	09-255
	Bottle	6 x 500 ml	09-256

STAINING

Histology stains solutions

IVD CE

Product	Size	Packaging	Code
Methyl green purified Unna	Bottle	6 x 250 ml	09-310
Mucicarmine solution Nuclear stain	Bottle	6 x 250 ml	09-257
New methylene Blue	Bottle	6 x 250 ml	09-260
Neutral red solution	Bottle	6 x 500 ml	09-283
Nigrosin solution for microbiology	Bottle	6 x 250 ml	09-258
Nuclear fast red Nuclear stain	Bottle	6 x 250 ml	09-259
Orceine acida to Shikata For elastic fiber staining	Bottle	6 x 250 ml	09-262
Orange G Pears Specific stains for hypophysis	Bottle	6 x 1 lt	09-103
Picro indigo carmine For connective tissue and eritrocytes	Bottle	6 x 250 ml	09-273
Picromallory (Blue aniline) For connective tissue and eritrocytes	Bottle	6 x 250 ml	09-275
Picromallory (orange G) For eritrocytes	Bottle	6 x 250 ml	09-276
Picromallory (acid fuchsine) For cytoplasm	Bottle	6 x 250 ml	09-277
Phenol 85%	Bottle	6 x 1 lt	09-220
Phenolo red water solution	Bottle	6 x 250 ml	09-284
Phenolo red pH indicator for water	Bottle	6 x 1 lt	09-286
Phloxine B solution For cytoplasm staining	Bottle	6 x 250 ml	09-271
Puchter Sirius red For amyloid	Bottle	6 x 250 ml	09-287
Red methyl solution	Bottle	6 x 250 ml	09-282
Red ponceau For amyloid	Bottle	6 x 1 lt	09-288
Red thiazine concentrated	Bottle	6 x 500 ml	09-289
Schiff Feulgen & Rossenbeck Stain for DNA	Bottle	6 x 500 ml	09-292
Schiff reagent for aldehyde	Bottle	6 x 500 ml	09-293
Schiff reagent for histology Stain for P.A.S. staining	Bottle	6 x 500 ml	09-294
Solid green FCF solution	Bottle	6 x 250 ml	09-305
Tincture mercuriothyolate of (MIF tecnica)	Bottle	6 x 250 ml	09-301
Timolftaleine solution	Bottle	6 x 250 ml	09-299
Toluidina blue phenicated solution	Bottle	6 x 500 ml	09-113
Tornasole tincture solution	Bottle	6 x 250 ml	09-300
Turck's solution for leucocyte For leukocyte manual counting	Bottle	6 x 250 ml	09-303

STAINING

Histology stains solutions

IVD CE

Product	Size	Packaging	Code
Van Gieson picro fuchsine To differentiate collagen from connective fibers	Bottle	6 x 1 lt	09-274
Victoria blue solution	Bottle	6 x 250 ml	09-311
Verheoff solution	Bottle	6 x 1 lt	09-321
Wright's stain slow to Pearse Stain for elastic fibers	Bottle	6 x 250 ml	09-315
Weigert resorcline rapid For detection of elastic fibers	Bottle	6 x 250 ml	09-316
Ziehl-Neelsen microscopy solution	Bottle	6 x 500 ml	09-319
	Bottle	6 x 1 lt	09-320

Cytology fixative

IVD CE



Spray fixative for PAP test, in vials for vaporized included, without propellant gas. It make at wax film on the smears sample to avoid loss of material and adulterated formation.

Product	Size	Packaging	Code
Cyto Spray Spray fixative for cytology, without propellant gas	Bottle	12 x 250 ml	R0150
Saccomanno fixative Fixative and preservative for liquid cytological sample	Bottle	6 x 500 ml	22-114

Cytology stains

IVD CE

Product	Size	Packaging	Code
Giemsa For distinguishing cellular elements in blood smears	Bottle	6 x 500 ml	R0210(3856)
	Bottle	6 x 1 lt	R0215
Papanicolaou Hematoxylin Harris Nuclear stain for Papanicolaou	Bottle	6 x 1 lt	R0180(3873)
Papanicolaou Hematoxylin Mayer Nuclear stain for Papanicolaou	Bottle	6 x 1 lt	R0182(3870)
Papanicolaou OG6 Cytoplasmic stain for Papanicolaou staining	Bottle	6 x 1 lt	R0170(3864)
Papanicolaou EA50 Cytoplasmic stain for Papanicolaou staining	Bottle	6 x 1 lt	R0160(3866)
May Grünwald Stain for cytology	Bottle	6 x 500 ml	R0220(3855)

STAINING

Cytology stains solutions

IVD CE

Product	Size	Packaging	Code
Cytology Hematoxylin Cytoplasmic stain for Papanicolaou	Bottle	6 x 500 ml	09-270
Congo Red Highman For staining amyloid in tissue	Bottle	6 x 250 ml	09-281
EA31 polychromatic solution Cytoplasmic stain for Papanicolaou	Bottle	6 x 1 lt	09-265
EA50 polychromatic solution Cytoplasmic stain for Papanicolaou	Bottle	6 x 500 ml	09-266
EA50 polychromatic solution metachromatic Cytoplasmic stain for Papanicolaou	Bottle	6 x 1 lt	09-266-1
EA50 normal solution Cytoplasmic stain for Papanicolaou	Bottle	6 x 1 lt	09-262-2
EA65 polychromatic solution Cytoplasmic stain for Papanicolaou	Bottle	6 x 1 lt	09-267
Lugol reactive Chelating solution for mercury	Bottle	6 x 500 ml	09-249
Lugol PVP stabilized Chelating solution for mercury	Bottle	6 x 500 ml	09-250
Lugol solution for colposcopy Chelating solution for mercury	Bottle	6 x 500 ml	09-251
Methyl green-pyronin To evidence simultaneously DNA and RNA	Bottle	6 x 250 ml	09-306
Orceine acetic solution	Bottle	6 x 250 ml	09-261
OG6 polychromatic solution Cytoplasmic stain for Papanicolaou	Bottle	6 x 1 lt	09-263
Orange II	Bottle	6 x 1 lt	09-264
Pyronin Y	Bottle	6 x 250 ml	09-278
Shorr solution Solution for hormonal cytology	Bottle	6 x 500 ml	09-295
Sudan III saturated solution For lipids stain	Bottle	6 x 250 ml	09-297
Sudan black saturated solution For lipids stain	Bottle	6 x 250 ml	09-298

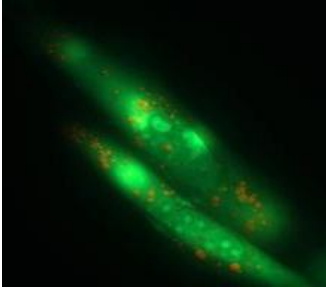


STAINING

Special Stain Kit

IVD CE

Acridine orange



Acridine orange for plasmodies and DNA

Acridine orange is used as a fluorescence dye for differential staining of DNA and RNA.



14-157

100

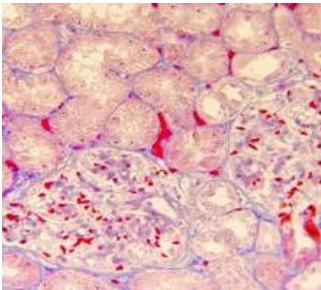
15-25°C

2 years

20'

DNA: green to yellow green
RNA: red fluorescence

Afog



Afog

Method for staining protein deposits in kidney biopsy



14-155

100

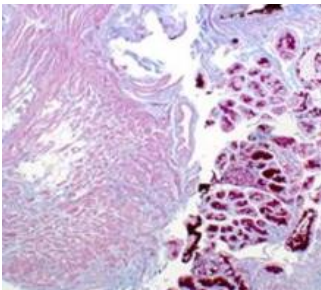
15-25°C

2 years

30'

Collagen fibrils: blue
Nuclei: black
Erythrocytes, cytoplasm: pink - orange
Elastic fibrils: pale pink or unstained
Glomerular protein deposits lively: red

Alcian Blu pH 1



Alcian Blu pH 1

Method for the specific demonstration of acid mucopolysaccharides in tissue section



14-101

100

15-25°C

2 years

50'

Acid mucins: torquose blue
Nuclei: red

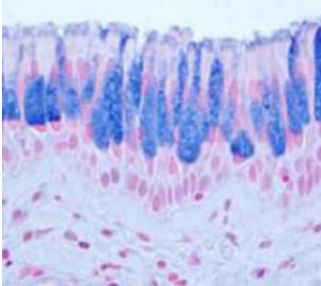


STAINING

Special Stain Kit

IVD CE

Alcian Blu pH 2,5



Alcian Blu pH 2,5

Method for the specific demonstration of acid mucopolysaccharides in tissue section



14-102

100

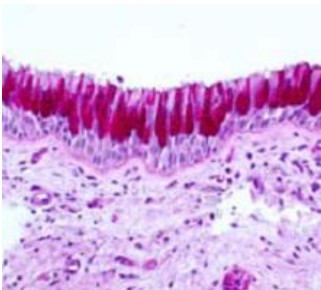
15-25°C

2 years

50'

Acid mucins: torquose blue
Nuclei: red

Alcian Blu P.A.S



Alcian Blu P.A.S

Combined method to distinguish between acid mucins, neutral mucins and carbohydrates in tissue sections.



14-103

100

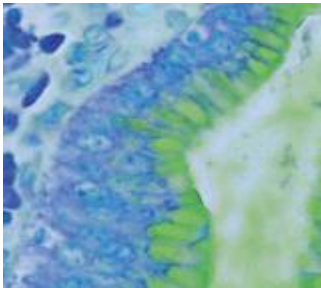
4-8°C

1 years

1h-30'

Acid mucins: torquose blue
Nuclei: red

Alcian Yellow - Toluidine Blue



Alcian Yellow - Toluidine Blue

Combined method for staining *Helicobacter pylori* and epithelial mucins in gastric tissue sections; recommended thickness 5 µm.



14-147

100

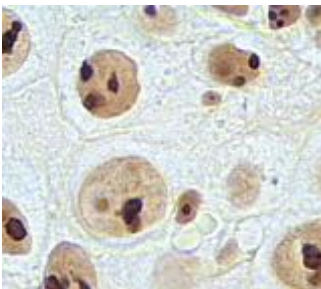
15-25°C

1 years

25'

Helicobacter pylori: blue
Mucin: yellow
Background: blue

AgNor



AgNor

Method to detect to argentafin proteins associated to the nucleolar organizing region (NOR)



14-100

100

15-25°C

1 years

30'

Argentafins granules: black

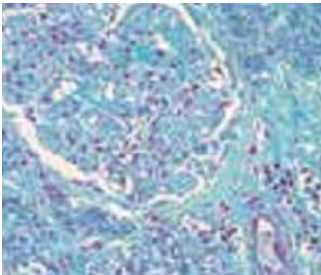


STAINING

Special Stain Kit

IVD CE

Azan trichrome



Azan trichrome staining

Method for the connective tissue, especially recommended for muscular fibres, glial cells, collagen, reticulum, kidney stromal glomerular cells, erythrocytes and nuclear chromatin.



14-104

100

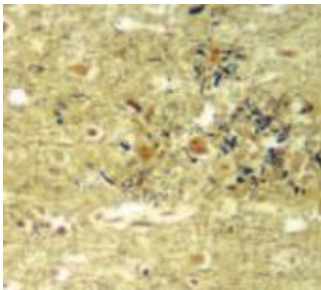
15-25°C

2 years

1h-40'

Collagen, reticulum, basophil cells granules of hypophysis, juxtglomerular granules and kidney glomerular stroma: deep blue
Neuroglia: reddish Muscle: orange
Chromatin, erythrocytes and acidophil granules of hypophysis: red
Cytoplasmic granules of hypophysis delta cells: light blue

Bielschowsky



Bielschowsky

Recommended method for staining neurofibrils, axons, dendrites and senile plaque.



14-148

100

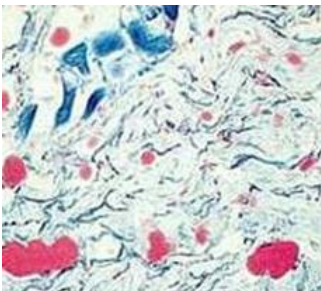
4-8°C

1 years

45'

Neurofibrils, axons and dendrites: black
Background: yellow - tobacco brown

Blue Nile



Blue Nile for neutral lipid

For staining neutral lipid lipids



14-150

50

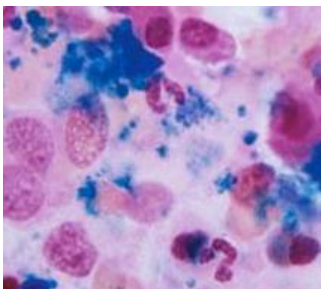
4°C

6 months

40'

Unsaturated hydrophobic lipids: blue
Free fatty acids: pink to blue
Phospholipids: blue

BOM bone marrow biopsy



BOM bone marrow biopsy

Decalcifying and fixative for bone marrow biopsy in the study of hematologic disease



14-156

100

15-25°C

2 years

30'

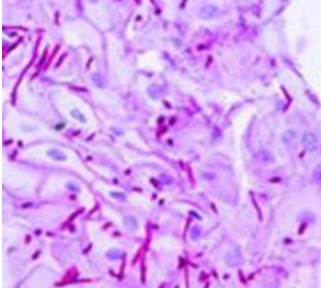
B5 modified
E.D.T.A acid buffer

STAINING

Special Stain Kit

IVD CE

Castaneda's stain for Rickettsiae



Castaneda's stain for Rickettsiae

To differentiate the rickettsiae, chlamydia and mycoplasma on the basis of cell structure, metabolism, genetic characteristics, pathogenicity, routes of disease transmission and methods of diagnosis.



14-154

50

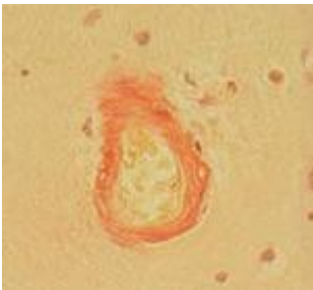
15-25°C

2 years

25'

Rickettsiae, elementary bodies of psittacosis: blue
Cell nuclei and cytoplasm: red

Congo Red



Congo Red

Method for staining amyloid in tissue sections



14-127

100

15-25°C

1 years

35'

Amyloid brick: red, birefringent in polarized light
Nuclei: blue

Diastase



P.A.S Diastase digestion method

Histological section digestion by diastase solution is recommended when glycogen has to be removed for observing only epithelial neutral mucins. This is the preferred method for hepatic biopsy.



14-105

100

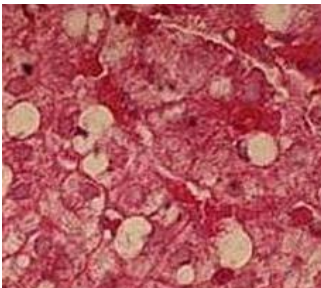
15-25°C

2 years

1h

Further to PAS reaction, glycogen removal can be observed by comparing the specimen with an adjacent section of the same specimen that was not treated with diastase

Ehder & Lojda



Ehder & Lojda for phospholipids

Phospholipids has been identified in nuclei by optical microscopic histochemical methods but these methods have been rarely applied at the electron microscopic level



14-151

50

15-25°C

1 years

25'

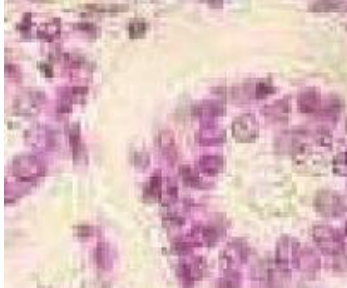
Phospholipids: blue
Nuclei: blue

STAINING

Special Stain Kit

IVD CE

Feulgen



Feulgen reaction for DNA

Used for DNA staining in tissue sections.



14-108



100



4-8°C



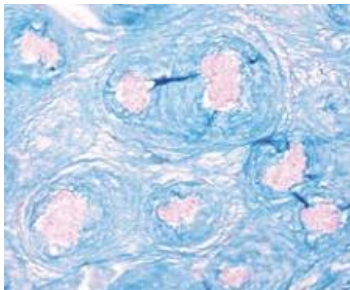
1 years



1h-5'

DNA: magenta

Fouchet-Van Gieson



Fouchet-Van Gieson for bilirubin

For staining bilirubin in tissue sections.



14-109



100



15-25°C



2 years



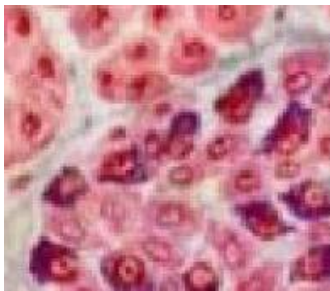
35'

Bilirubin: green

Connective tissue: red

Collagen: yellow

Fuchsin Paraldehyde



Gomori's paraldehyde-fuchsin

For staining, in tissue sections, the elastic fibres and secretion granules in alpha and beta cells of the islands of Langerhans in endocrine pancreas..



14-110



100



15-25°C



2 years



1h-15'

Beta cells granules: dark violet

Cells nuclei: dark violet

Background: red

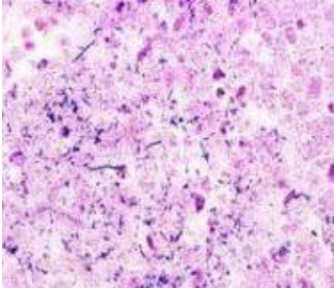
Connective tissue: green

STAINING

Special Stain Kit

IVD CE

Gram



Gram for bacteria

Method for distinguishing Gram-positive and Gram-negative bacteria in histological sections, smears and tissue appositions.



14-111

100

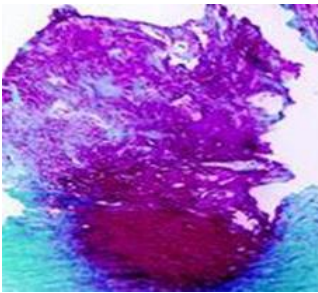
15-25°C

2 years

1h-5'

Gram-positive bacteria blue;
Gram-negative bacteria red
Nuclei red

Gram-Weigert's for fibrin



Gram-Weigert's for fibrin

Method for staining fibrin in histological sections, especially suitable for vascular pathology.



14-162

50

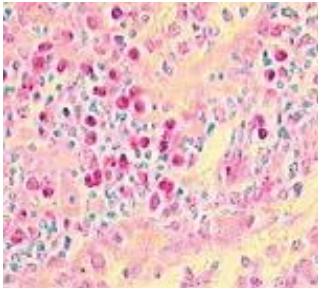
15-25°C

2 years

30'

Fibrin: violet
Nuclei red

Green methyl pyronin



Green methyl pyronin

Method recommended for simultaneously staining DNA and RNA in histological sections. Especially suitable for staining plasma cells and RNA in histological sections and cytological preparations.



14-130

100

15-25°C

1 years

45'

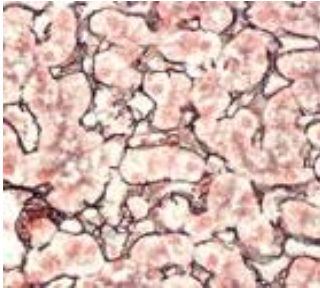
DNA: pale green
RNA: pink to red
Mast cell granules: blue
Background: turquoise

STAINING

Special Stain Kit

IVD CE

Gordon-Sweet



Gordon-Sweet

Recommended method for staining argyrophilic reticular fibres in the connective tissue.



14-141



100



15-25°C



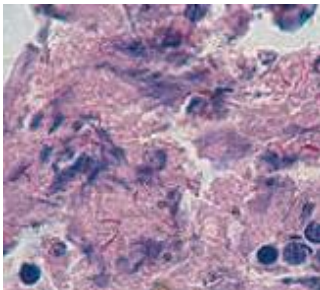
2 years



40'

Nuclei: red

Gridley for amoeba



Gridley for amoeba

The procedure does not stain amoebae differentially but is useful in that it demonstrates the ingested erythrocyte which is stained by the eosin.



14-143



100



15-25°C



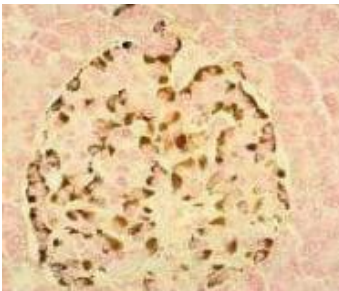
1 years



50'

Amoeba: blue-green
nuclei of amoeba: deeper blue-green
ingested erythrocytes: deep rose
connective tissue: green

Grimelius



Grimelius for argyrophilic reaction

For staining argyrophilic substances in tissue sections and appositions.



14-112



100



4-8°C



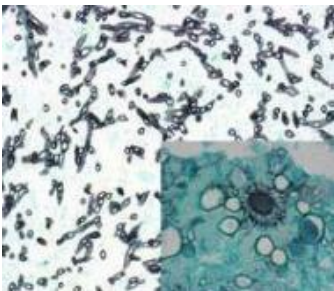
1 years



3h-35'

Argyrophilic granules: from light brown to black

Grocott



Grocott for fungi

Method used for staining fungi in tissue sections



14-113



100



4-8°C

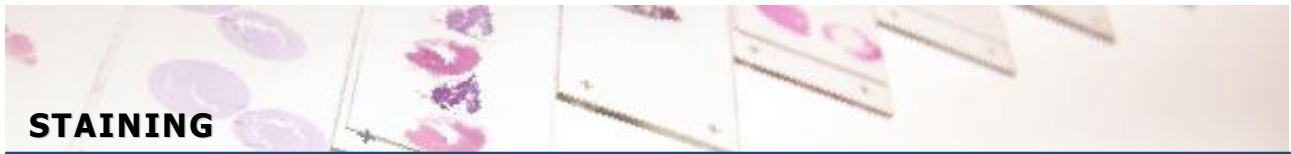


1 years



1h-50'

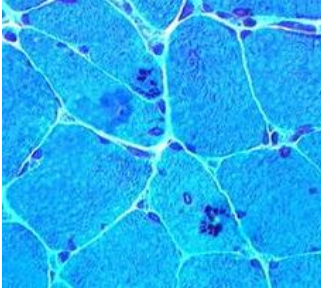
Fungi: sharply delineated in black
Mucines: dark grey
Background: green



Special Stain Kit

IVD CE

Gomori trichrome



Gomori trichrome

Reference method for the analysis of collagen fibers in liver and kidney tissue. Suitable to visualize the ragged red fibers, present in many mitochondrial myopathies



14-159

100

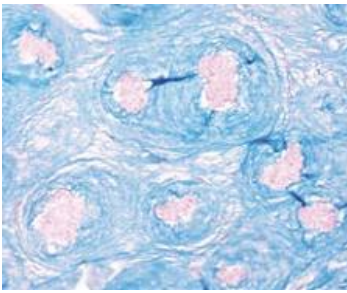
15-25°C

2 years

30'

Muscle fibers, cytoplasm green blue
Collagen Green or blue
Nuclei red purple

Hyaluronidase



Hyaluronidase from bovine tests

Histology section digestion by hyaluronidase is recommended for removing complex carbohydrates, such as hyaluronic acid and chondroitin sulphate A and B.



14-106

100

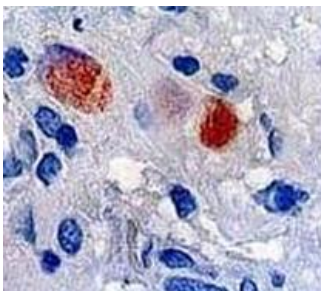
4-8°C

1 years

1h

The failure to stain the specimen section through Alcian Blue has to be related to the presence of hyaluronic acid or chondroitin sulphates

High iron diammine



High iron diammine (intestinal metaplasia)

High Iron diammine for the staining intestinal metaplasia



14-139

100

15-25°C

2 years

18-24h

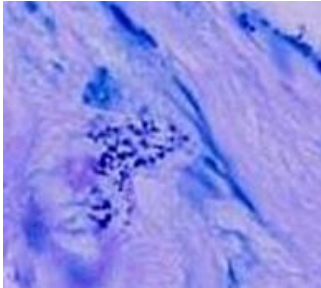
Nuclei: red
Sulphated mucins: black brown
Carboxylated mucins: blue

STAINING

Special Stain Kit

IVD CE

Kinyoun modified acid fast red



Kinyoun modified acid fast red

Cryptosporidium and *Isospora* species have been recognized as causes of severe diarrhea in immunocompromised hosts, but they can also cause diarrhea in the immunocompetent host. Oocysts in clinical specimens may be difficult to detect without special staining. *Cyclospora cayetanensis* has also been reported to be acid fast. Modified acid-fast stains are recommended for demonstrating these organisms.



14-142

100

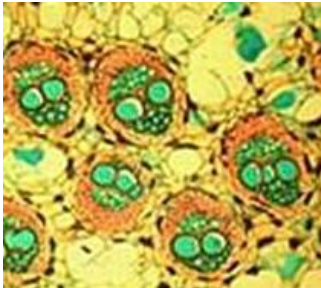
4°C

1 years

40'

The acid fast bacilli are stained dark red to pink

Kreiberg (Alcian green)



Kreiberg (Alcian green)

Alcian green stain binds to cartilage, but not decalcified bone.



14-144

100

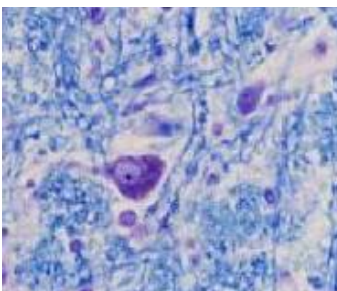
15-25°C

2 years

40'

Nuclei: blue
Connective tissue: green
Cheratin: red
Mucopolysaccharides: green

Luxol fast blue



Klüver Barrera Luxol fast blue

Recommended method for staining myelin and phospholipids in histological sections.



14-115

100

15-25°C

2 years

20'+
overnight

Myelin: turquoise blue
Neurons and glial nuclei: pink to violet
Nissl substance: pale pink

STAINING

Special Stain Kit

IVD CE

Mallory Trichrome



Mallory Trichrome

Method for staining connective tissue in histological sections. It is especially suitable for staining collagen, reticulum, cartilage, bones, amyloid.



14-116

100

4-8°C

1 years

22'

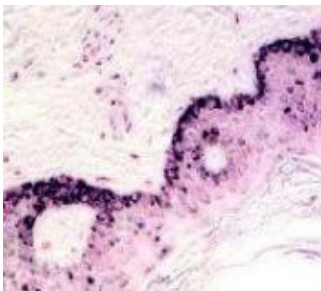
Collagen fibrils: deep blue

Nuclei, myofibrils, neuroglia fibrils, cartilage, bone: red

Erythrocytes, myelin: gold yellow

Elastic fibrils: pale pink, yellow or unstained

Masson Fontana



Masson Fontana

Method for observing the melanotic pigment in histological tissue sections



14-117

100

4-8°C

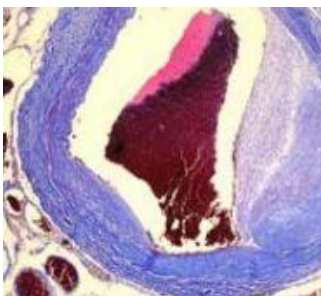
1 years

45'+
overnight

Melanin: black

Nuclei: red

Masson Trichrome



Masson Trichrome

Method for connective tissue, especially suitable for gametes, nuclei, neurofibrils, neuroglia, collagen, keratin, intracellular fibrils and Golgi apparatus negative images.



14-118

100

15-25°C

2 years

35'

Nuclei and gametes: black

Cytoplasm, keratin, muscle fibres, acidophil granules: red

Collagen, mucus, basophil granules of hypophysis: blue

Delta cells granules of hypophysis: blue

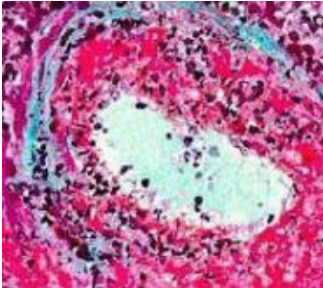
Erythrocytes: yellow

STAINING

Special Stain Kit

IVD CE

Masson Trichrome Goldner



Masson Trichrome Goldner

Method for connective tissue, suitable for gametes, nuclei, neurofibrils, neuroglia, collagen, keratin, intracellular fibrils and Golgi apparatus negative image.



14-119



100



15-25°C



1 years



35'

Nuclei and gametes: black

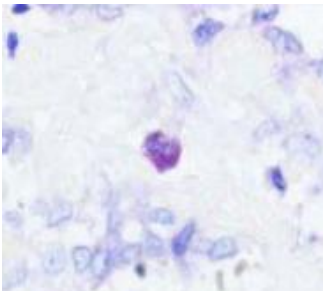
Cytoplasm, keratin, muscle fibres, acidophil granules: red

Collagen, mucus, basophil granules of hypophysis: blue

Delta cells granules of hypophysis: blue

Erythrocytes: yellow

May Grünwald Giemsa



May Grünwald Giemsa for sections

Method for distinguishing cell types and staining parasites in tissue sections; especially suitable for lymphohematopoietic tissues. This staining method is often used for identifying endothelial reticulum.



14-120



100



15-25°C



1 years



35'

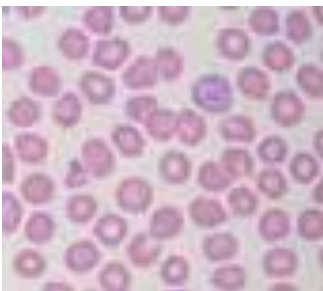
Nuclei: blue

Basophil cytoplasm: from pale blue to dark blue

Acidophil cytoplasm: pink

Bacteria: blue

May Grünwald Giemsa for smears



May Grünwald Giemsa for smears

Main protocol for cell typing and parasite identifying on blood smears.



14-120



100



15-25°C



1 years



35'

Nuclei: Violet

Basophil cytoplasm: from pale Blue to dark Blue

Acidophil cytoplasm: from pale Red to Pink

STAINING

Special Stain Kit

IVD CE

Malachite green



Malachite green for oocysts and cryptosporidium

Dye used for bacteriological staining method.



14-158



100



15-25°C



2 years



30'

Spore: green
Cell material: red

MBS for fibrin stain



MBS for fibrin stain

This method has become popular as it is less dependent on the skill of the technologist and the extended fixation that is desirable with the Picro-Mallory, and may be done quite adequately on formalin fixed tissues with secondary fixation of sections for an hour at 60°C in either Bouin's fluid or saturated aqueous picric acid.



14-152



100



4°C



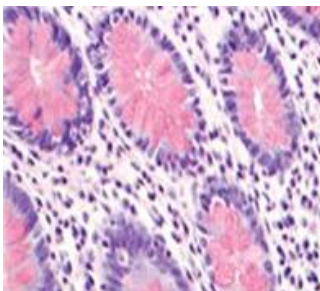
1 years



90'

Fibrin: yellow
Old fibrin: blue
Collagen: blue
Nuclei: blue black
Muscle: red

Mucicarmin



Mayer's Mucicarmin

method for staining epithelial acid mucopolysaccharides (mucins) in histological sections. The use of Mucicarmin has a low level of specificity: indeed, generally mucins from fibroblasts are stained poorly.



14-140



100



15-25°C



1 years



50'

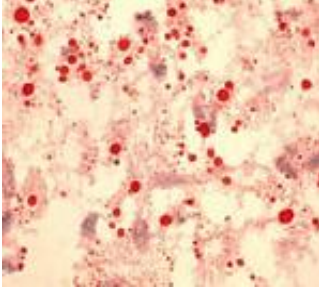
Mucins: deep pink to red
Nuclei: blue-violet
Other components: orange

STAINING

Special Stain Kit

IVD CE

Oil red O



Oil red O

For staining lipids on cryostat tissue sections. Fixation: we recommend using saline formalin or Baker's fixative to prevent phospholipid dissolution.



14-146

100

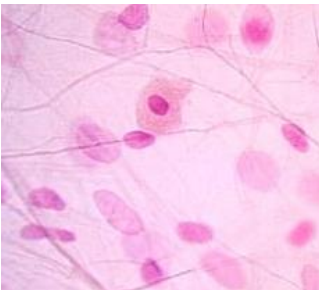
15-25°C

1 years

25'

Lipids: red
Nuclei: blue

Orcein



Orcein for elastic fibers

Identification of elastic fibers in tissue sections.



14-153

100

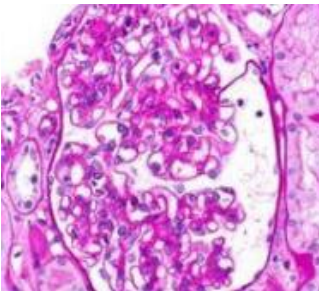
15-25°C

1 years

30'

Elastic fibers: brown-purplish red
Background: almost colorless

P.A.S. Hotchkiss - Mc Manus



P.A.S. Periodic Acid Schiff according to Hotchkiss - Mc Manus

For staining normal or pathological tissue components through adjacent aminohydroxyl or glycolic groups.



14-122

100

4-8°C

1 years

50'

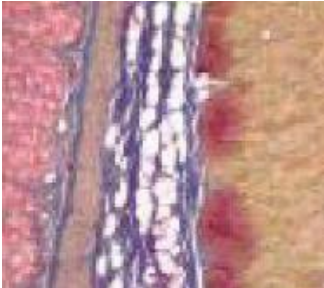
Positive P.A.S. substances magenta red
Nuclei blue

STAINING

Special Stain Kit

IVD CE

P.A.S. Morel - Maronger



P.A.S. Morel - Maronger

Method suitable for observing simultaneously neutral mucopolysaccharides and connective tissue in tissue sections.



14-123



100



4-8°C



1 years



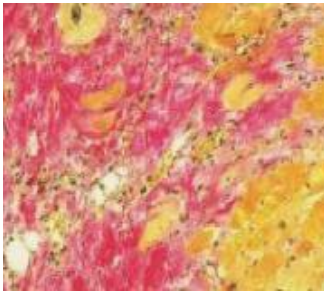
45'

P.A.S. positive substances: magenta red

Connective tissue: blue green

Muscle, horny layer of the skin, neuroglia fibers and erythrocytes: yellow-green

Perls - Van Gieson



Perls - Van Gieson

Method suitable for observing simultaneously reactive ferric iron, collagen and connective tissue in tissue sections.



14-124



100



15-25°C



1 years



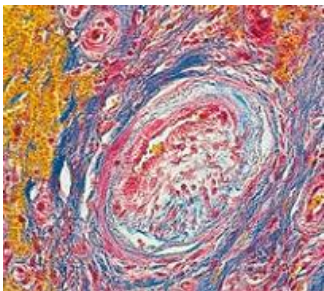
35'

Reactive ferric iron: blue

Collagen: purple red

Cytoplasm, muscle, horny layer of the skin, neuroglia and erythrocytes: yellow

Picro Mallory



Picro Mallory Trichrome

Tichrome staining especially recommended for connective tissue sections.



14-125



100



15-25°C



1 years



40'

Nuclei: dark brown

Collagen fibers: dark blue

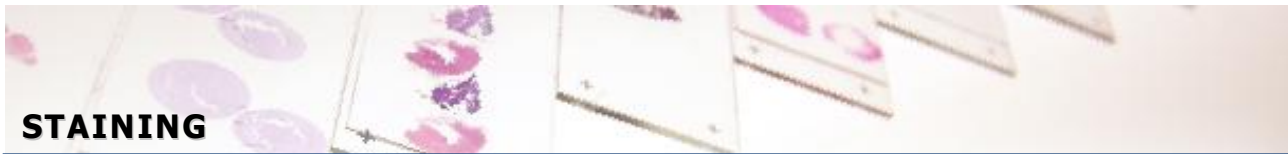
Ground substance of cartilage, bone, mucus, basophil granules of hypophysis and amyloid: varying shades of blue

Fibroglia, neuroglia, axis cylinders and fibrin: red

Acidophil granules of hypophysis orange

Myelin and erythrocytes: yellow

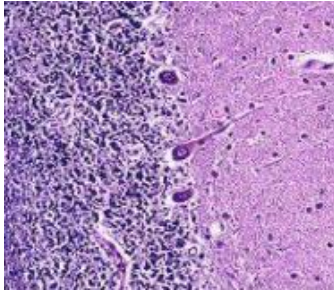
Elastic fibers: from pale pink to yellow



Special Stain Kit

IVD CE

P.T.A.H.



P.T.A.H. phosphotungstic hematoxylin

This method was originally developed for staining the neuroglia. Nowadays, it is used for distinguishing smooth and striated muscle tissues (staining the isotropic bands of skeletal muscle myofibrils). It is also used for fibrin.



14-107

100

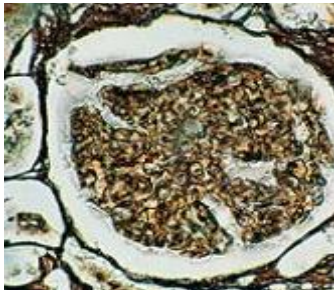
15-25°C

1 years

13+
overnight'

Nuclei, fibrins (for a great part) myofibrils, astrocytes, some elastic fibers, neuroglia, myelin fibers: blue
Collagen, bone matrix, cartilage rick: red in various tonalitie

Silver stain Gomori



Silver stain Gomori

Recommended method for staining argyrophilic reticular fibres in the connective tissue.



14-114

100

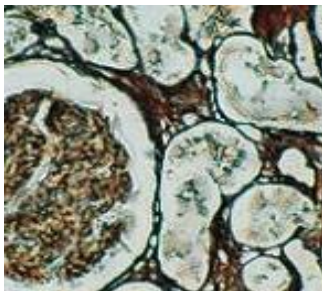
4-8°C

1 years

35'

Reticular and nervous fibers: black
Connective tissue: tobacco brown
Collagen: gold yellow

Silver methenamine P.A.S.M



Silver methenamine P.A.S.M

Method used for staining mucopolysaccharidic and argyrophilic elements (basal membranes, mycetes, bacteria, etc.) in tissue sections. Preferred method for studying basal membranes in kidney biopsy.



14-128

100

4-8°C

1 years

1h-45'

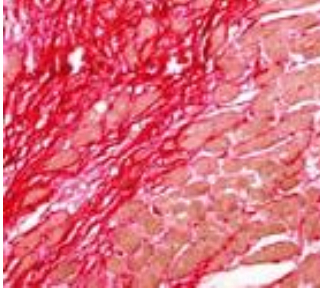
Basement membranes, glycogen, mycetes and bacterial capsule: black

STAINING

Special Stain Kit

IVD CE

Sirius Red



Sirius Red

Method suitable for staining collagen fibers and bile pigments in tissue sections.



14-145



100



15-25°C



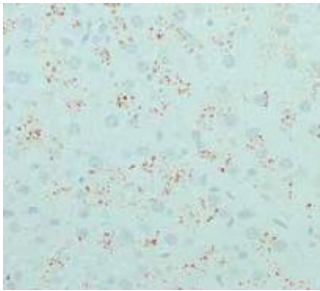
1 years



60'

Collagen fibers: red
Bilirubin: green
Nuclei: blue
Erythrocytes: red

Rhodamine modified MCF



Rhodamine modified MCF

Method for demonstrating copper by using rhodamine in hepatic tissue sections.



14-126



100



15-25°C



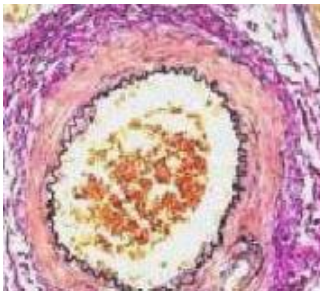
1 years



20h

Copper: Brown-Red
Nuclei: Blue-Violet

Van Gieson trichrome



Van Gieson trichrome

Preferred method for connective tissue, especially recommended for staining collagen fibers distinguishing them from the connective tissue.



14-129



100



15-25°C



1 years



35'

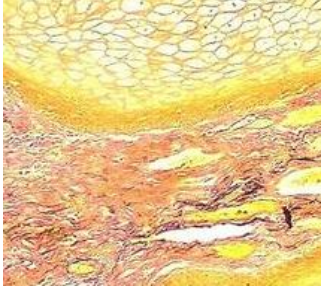
Nuclei: black
Collagen fibers: purplish red
Cytoplasm, smooth and striated muscle, cornified epithelium, neuroglia and erythrocytes: yellow

STAINING

Special Stain Kit

IVD CE

Verhoeff



Acridine orange for plasmodies and DNA

Method for staining elastic fibers in sections. Especially recommended for vascular pathology.



14-160



100



15-25°C



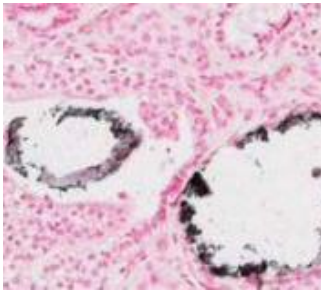
2 years



60'

Elastic fibers and nuclei: black
Collagen: red
Other tissue elements: yellow

Von Kossa



Von Kossa method for calcium

Method recommended for staining calcium ions in histological sections



14-131



100



4-8°C



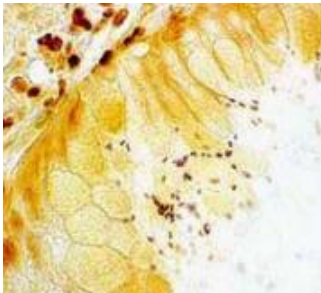
1 years



1h-25'

Sites calcium deposits: black
Nuclei: red

Warthin-Starry



Warthin-Starry method for spirochetes

Method for spirochete staining



14-132



100



15-25°C



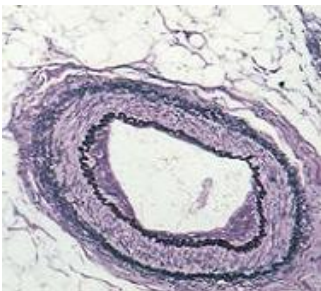
1 years



35'

Spirochetes and other microorganisms: black
Background: golden brown

Weigert's Long method



Weigert's Long method

Method for staining elastic fibers in histological sections



14-133



100



15-25°C



1 years



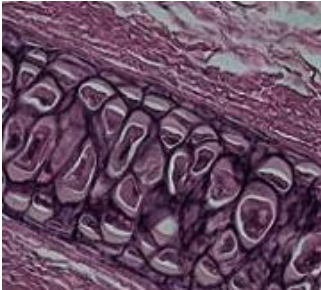
25'+
overnight

Elastic fibers: from dark blue to black

Special Stain Kit

IVD CE

Weigert's Fast method



Weigert's (fast method)

Method for staining elastic fibers in histological sections, especially suitable for vascular pathology.



14-134

100

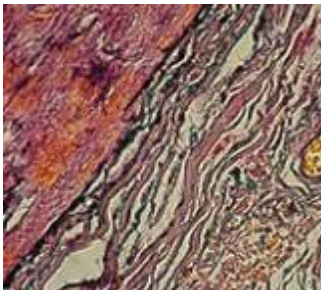
15-25°C

2 years

60'

Elastic fibers: purplish red-brown
Nuclei: red

Weigert Van Gieson LM



Weigert Van Gieson (long method)

Method used for simultaneously staining elastic fibres, connective tissue, collagen and nuclei. Recommended for vascular pathology



14-135

100

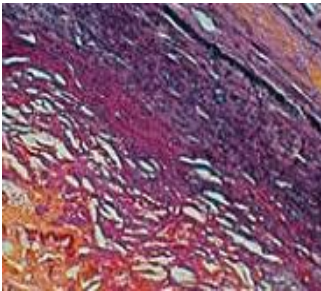
15-25°C

1 years

25'+
overnight

Spirochetes and other microorganisms: black
Background: golden brown

Weigert Van Gieson FM



Weigert Van Gieson (fast method)

Method used for simultaneously staining elastic fibers, connective tissue, collagen and nuclei. Recommended for vascular pathology.



14-136

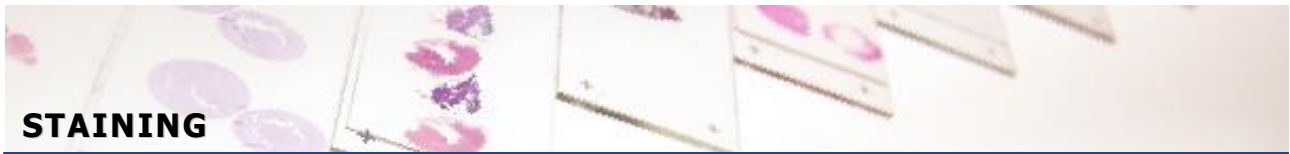
100

15-25°C

2 years

60'

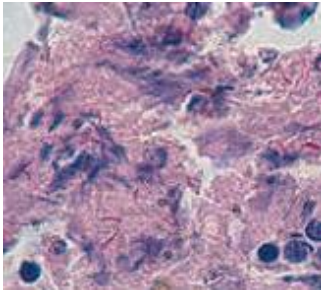
Elastic fibers: from purplish red to brown
Nuclei: black
Collagen: various shades of red
Connective tissue, erythrocytes: yellow



Special Stain Kit

IVD CE

Ziehl - Neelsen



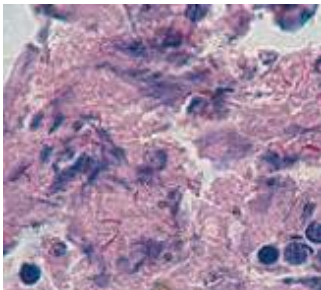
Ziehl - Neelsen for mycobacteria

For staining pathogenic mycobacteria, especially for Koch's bacillus, in histology sections, sputum smears, cultures and appositions.

14-137	100	15-25°C	2 years	50'

Koch's bacillus and other acid resistant elements: red
Nuclei: blue

Ziehl - Neelsen Fite



Ziehl - Neelsen Fite

For staining pathogenic mycobacteria, especially for Koch's bacillus, in histology sections, sputum smears, cultures and appositions.

14-138	100	15-25°C	1 years	45'

Koch's bacillus and other acid resistant elements: red
Nuclei: blue

Legend:

Catalog Number	Test Number	Storage temperature	Stability of product	Time required



Want more information?

If you need instruments for automatic slide staining refer to the catalog Histo-Line Instruments. You can find the complete list of the Histo-Cyto linear stainer and special accessories that can help you.



Want to see all the available instruments? Look it in the instruments catalog or on the website



Histo-Line Laboratories

Innovative life science solutions





Modular storage system for paraffin block
Modular storage system for slides
Archives high capacity for blocks
Archives high capacity for slides

STORAGE

Modular Storage System For Paraffin Block

IVD CE



Modular stackable to store paraffin embedded samples. The modules are made of metal and drawers are available in metal or ABS plastic deformable for maximum protection of the samples

Product	Size	Packaging	Code
Filing cabinet metal ivory Stackable Filing cabinet in metal with 14 drawers ivory color	Module	1 pc	R4192
Filing cabinet ABS ivory Stackable Filing cabinet ABS plastic with 14 drawers ivory color	Module	1 pc	R4192-ABS
Filing cabinet ABS blue Stackable Filing cabinet ABS plastic with 14 drawers blue color	Module	1 pc	R4192A-ABS
Filing cabinet ABS green Stackable Filing cabinet ABS plastic with 14 drawers green color	Module	1 pc	R4192G-ABS
Filing cabinet ABS havana Stackable Filing cabinet ABS plastic with 14 drawers havana color	Module	1 pc	R4192H-ABS
Filing cabinet ABS pink Stackable Filing cabinet ABS plastic with 14 drawers pink color	Module	1 pc	R4192R-ABS
Filing cabinet ABS yellow Stackable Filing cabinet ABS plastic with 14 drawers yellow color	Module	1 pc	R4192Y-ABS
Filing cabinet for Macro Cassettes Stackable Filing cabinet in metal with 7 drawers ivory color	Module	1 pc	R4192/MACRO
Top cover For all Filing cabinet in metal ivory color	Module	1 pc	R0548
Base stand For all Filing cabinet in metal ivory color	Module	1 pc	R0549

STORAGE

Modular Storage System For Slides

IVD CE



Modular stackable to store slide. The modules are made of metal and drawers are available in metal or ABS plastic deformable for maximum protection of the slide

Product	Size	Packaging	Code
Filing cabinet metal ivory Stackable Filing cabinet in metal with 14 drawers ivory color	Module	1 pc	R0540
Filing cabinet ABS ivory Stackable Filing cabinet ABS plastic with 14 drawers ivory color	Module	1 pc	R0540-ABS
Filing cabinet ABS blue Stackable Filing cabinet ABS plastic with 14 drawers blue color	Module	1 pc	R0540A-ABS
Filing cabinet ABS green Stackable Filing cabinet ABS plastic with 14 drawers green color	Module	1 pc	R0540G-ABS
Filing cabinet ABS havana Stackable Filing cabinet ABS plastic with 14 drawers havana color	Module	1 pc	R0540H-ABS
Filing cabinet ABS pink Stackable Filing cabinet ABS plastic with 14 drawers pink color	Module	1 pc	R0540R-ABS
Filing cabinet ABS yellow Stackable Filing cabinet ABS plastic with 14 drawers yellow color	Module	1 pc	R0540Y-ABS
Top cover For all Filing cabinet in metal ivory color	Module	1 pc	R0548
Base stand For all Filing cabinet in metal ivory color	Module	1 pc	R0549
Spiral/spring spacer	Box	1 pc	R0540

STORAGE

Archives high capacity for blocks

IVD CE



Storage cabinet for paraffin blocks, static or with wheels and anti-lock and key for maximum security of samples. It equipped with special edge for preventing falls, preventing trays blocks slip and fall on the go shifts.

Product	Size	Packaging	Code
Mobile storage cabinet Units mobile archive coated metal 18 floors complete with 468 colored fronts and drawers in ABS (color on request) that allow you to store about 25200 blocks of inclusion. Dimensions (H180 x W100 x D50 cm)	1 Module	1 pc	MD-5415-00
Static storage cabinet Units static archive coated metal 18 floors complete with 468 colored fronts and drawers in ABS (color on request) that allow you to store about 25200 blocks of inclusion. Dimensions (H170 x W100 x D50 cm)	1 Module	1 pc	MD-6600-18
Static storage cabinet (half capacity) Unit archive modular metal coated 8-story full of 208 drawers in ABS and colored fronts (color on request) that allow you to store about 11200 boxes of inclusion. Dimensions (H80 x W100 x D50 cm)	1 Module	1 pc	MD-6600-08
Structure with plans dishes without drawer Archive modular units coated metal 5 floors, each capable of Holding 8 filing cabinet MedBox. Total capacity of 14,560 boxes of inclusion (8 x 5 x 364). Dimensions (H80 x W100 x D50 cm)	1 Module	1 pc	MD-6700-05
Structure with plans dishes without drawer Archive modular units coated metal 11 floors, each capable of Holding 8 filing cabinet MedBox. Total capacity of 32,000 boxes of inclusion (11 x 5 x 364). Dimensions (H170 x W100 x D50 cm)	1 Module	1 pc	MD-6700-11
Med Box Filing cabinet cardboard with lid and 7 internal dividers to store 364 cassettes of inclusion. Dimensions (L22 x H47 x D48 cm)	1 Module	1 pc	MD-5220-00

STORAGE

Archives high capacity for slides

IVD CE



Storage cabinet for slides, static or with wheels and anti-lock and key for maximum security of samples. It is equipped with special edge for preventing falls, preventing trays of slides slip and fall on the go shifts.

Product	Size	Packaging	Code
Mobile storage cabinet Units mobile archive coated metal 11 floors complete with 286 colored fronts and drawers in ABS (color on request) that allow you to store approximately 121,000 slides. Dimensions (H180 x W100 x D50 cm)	1 Module	1 pc	MD-5410-00
Static storage cabinet Units static archive coated metal 11 floors complete with 286 colored fronts and drawers in ABS (color on request) that allow you to store approximately 121,000 slides. Dimensions (H170 x W100 x D50 cm)	1 Module	1 pc	MD-6500-11
Static storage cabinet (half capacity) Units mobile archive coated metal 5 floors of 130 drawers in ABS and colored fronts (color on request) that allow you to store approximately 55,000 slides. Dimensions (H80 x W100 x D50 cm)	1 Module	1 pc	MD-6500-05

Histo-Line Laboratories

Innovative life science solutions





Analytics index

Analytics index

A

Acridine orange - Kit	36
Afog - Kit	36
Afog solution	31
AgNOR - Kit	37
Alcian blue pH 1.0 - Kit	36
Alcian blue pH 2.5 - Kit	37
Alcian blue P.A.S. - Kit	37
Alcian yellow - Toluidine Blue - Kit	37
Albert stain	31
Albumine glycerinated	29
Alizarine S red	31
Amethyst Paraffin	12
Amman's lactophenol solutions	31
Aniline blue Masson	31
Aniline blue - Orange G Heidenhain	31
Aniline blue - Orange G Mallory	31
Archives high capacity for Blocks	60
Archives high capacity for Slides	61
Armand staining solution	31
Azan trichrome - Kit	39

B

Base molds	14
Base stand (Filing Cabinet)	58
Basket with handle in PMP for staining	27
B5 fixative	8
Bielschowsky - Kit	38
Biopsy cassettes	13
Biopsy pads blue	15
Biopsy pads white	15
Biopty cassette	13
Block archive	60
Blue astra pH 2.5	31
Blue bromophenol indicator	31
Blue bromophenol solution	31
Blue cresyl brillant	31
Blue lactophenol	31
Blue methylene solution 15	31
Blue methylene Mallory	31
Blue Nile - Kit	38
Blue toluidine polychrome	31
Blue trypan water solution	31
Blue unna solution	31
BOM bone marrow biopsy - Kit	38
Bouin fixative	8
Bouin fixative concentrated solution	8
Bouin Hollande fixative	8
Bromothymol blue phenicated solution	31
Brush for microtomes and cryostats	21
Buffered formalin 4% (oxidometric title)	8

Buffered formalin OsM certified	8
---------------------------------	---

C

Carazzi haemalum	30
Carmine allum solution	31
Cassettes for processing	13-14
Castaneda's stain for Rickettsiae - Kit	39
Cyto Spray	34
Cytology Hematoxylin	35
Citrine Paraffin	12
Citro Histoclear	12
Congo Red - Kit	39
Congo Red Highman	35
Coplin staining jar	29
Coverslips	26
Cresyl violet Kluwer Barrera	31
Cresyl violet according to Moore	31
Cresyl violet according to Gram	31
Cresyl violet metachromatic	31
Cresyl violet oxalate Gram Hucker	31
Cloralio hematoxylin	31
Cryostat holders	22
Cutting disposable blade	20-21

D

Decalcyfing solutions	9
Degommier auramine phenicated	32
Degommier decolorized	32
Diaphane	12
Diastase - Kit	39
Disposable Molds	15

E

EA31 polychromatic solution	35
EA50 polychromatic solution	35
EA50 polychromatic solution metachromatic	35
EA50 normal solution	35
EA65 polychromatic solution	35
Ehder & Lojda - Kit	39
Emerald Paraffin	12
Eosin Y alcoholic	30
Eosin Y alcoholic stock solution	30
Eosin floxin alcoholic stock solution	30
Eosin Y water solution 1%	30
Eosin Y water solution 1% (acidified)	30
Eosin orange	30
Erythrosine orange Dominici	32
Erythrosine B solution	32

Analytics index

F			
Feulgen and Rossenbeck - Kit	40	Hematoxylin Gill modified	30
Filing cabinet	58	Hematoxylin Gill II	30
Filing cabinet for Macro Cassettes	58	Hematoxylin Harris Papanicolaou	34
Fish zincate formalin	8	Hematoxylin Heidenhain	30
Fixatives	8	Hematoxylin Phosphotungstic - P.T.A.H	30
Floxina B Gram	32	High iron diammine - Kit	43
Formalin	8	Histo - Alcohol 95%	12
Formalin acetate buffer	8	Histo - Alcohol 99%	12
Formalin at sucrose	8	Histo blade LPH35	20
Formalin fosfate buffer	8	Histo blade LP35S	20
Formalin Millioning Carson pH 7,2-7,4	8	Histo blade HP35S	20
Fouchet-Van Gieson - Kit	40	Histo blade Type 26	20
Fuchsine paraldehyde Gridley	32	Histo blade Type 42	20
Fuchsin Paraldehyde - Kit	40	Histo blade Type 52	20
Fuchsine ponceau Masson	32	Histo blade Type 67	20
Fuchsine Ziehl Neelsen solution	32	Histo blade Type 69	20
Feulgen - Kit	40	Histo blade Type 70HP	20
		Histo blade Type 80LA (22°)	20
		Histo blade NH35	20
		Histo blade S22	20
		Histo blade S35L	20
		Histo Clip	16
		Histo Decalc decalcifier	9
		Histofix	8
		Hyaluronidase - Kit	43
G		I	
Giemsa	34	Ice Spray	21
Geimsa R stock solution	32	Immersion oil for microscopy	29
Geimsa L stock solution	32		
Gentian violet phenicated solution	32		
Glass slide holder basket	27		
Gomori's trichrome - Kit	43		
Gordon-Sweet - Kit	42		
Gram - Kit	41		
Gram basic fuchsine	32		
Gram safranine	32		
Gram gentian violet phenicated solution	32		
Gram-Weigert's for fibrin - Kit	41		
Green methyl pyronin - Kit	41		
Gridley for amoeba - Kit	42		
Grimelius - Kit	42		
Grocott - Kit	42		
H		K	
Handle stainless steel basket glass slide		Kinyoun modified acid fast red - Kit	44
Harris Hematoxylin	30	Kreiberg (Alcian green) - Kit	44
Harris Hematoxylin GB modified for histology	30	Kuhne solution	32
Harris Hematoxylin AB for Bouin sections	30		
Heated forceps	16		
Hellendhal staining jar	28		
Hellendhal staining dish made of glass	28		
Hellendhal staining dish made of TPX	28		
Hematoxylins Anderson	30		
Hematoxylins & Eosins	30		
Hematoxylin Delafield	30		
Hematoxylin Mayer	30		
Hematoxylin Mayer Papanicolaou	34		
		L	
		Lab-O-Wax 56-58°C	12
		Lab-O-Wax Plus 56-58°C	12
		Lab-O-Wax 52-54°C	12
		Laveran's (panchrome)	32
		Leishman stain	32
		Light green Goldner	32
		Light green Grocott	32
		Lugol reactive	35
		Lugol PVP stabilized	35
		Lugol solution for colposcopy	35
		Luxol fast blue	32

Analytics index

M		O	
Mayer carmallum	32	Opale paraffin	12
Mayer haemalum	32	Orange II	35
Mayer hematoxylin	30	Orange G Pearse	33
May Grunwald	34	Orceine - Kit	48
May Grunwald (Blue methylene eosin)	32	Orceine acetic solution	35
May Grunwald Giemsa - Kit	46	Orceine acida to Shikata	33
May Grunwald Giemsa for smears - Kit	46		
Malachite green - Kit	47	P	
Mallory trichrome - Kit	45	Pap Pen	
Manual staining set	27	Papanicolaou EA50	34
Masson Fontana - Kit	45	Papanicolaou OG6	34
Masson's trichrome - Kit	45	P.A.S. Hotchkiss-McManus - Kit	48
Masson's trichrome Goldner - Kit	46	P.A.S. Morel-Maronger - Kit	49
Mayer whit phenolphthalein	32	Pyronin Y	35
Med Box	60	P.T.A.H. - Kit	50
Mega cassettes	14	Purified eosin alcoholic solution	30
Methyl green-pyronin	35	Paraffins	12
Methyl green purified Unna	33	Paraldehyde fuchsin. Gomor i- Kit	40
Microcover Permount	29	Perls - Van Gieson - Kit	49
Microscope slides	26	Pertex	29
Microscope slides standard	26	Phenol 85%	33
Microscope slides sandblasted	26	Phenolo red water solution	33
Microscope slides ground edges	26	Phenolo red pH indicator for water	33
Microscope slides one end, double frosted ground edges	26	Phloxine B solution	33
Microscope slides Superfrost	26	Phosphotungstic hematoxylin (P.T.A.H.)	50
Microscope slides, Superfrost colored marking area	26	Picro indigo Carmine	33
Microtome accessories	20	Picro Mallory - Kit	49
Microtome blade	20	Picro Mallory (Blue aniline)	33
Microtome cleaning spray	21	Picromallory (orange G)	33
Microtome Oil	21	Picromallory (acid fuchsine)	33
Mini Pap Pen	15	Pink Sapphire Paraffin	12
Mobile storage cabinet	60	Plastic spare 12 tanks	27
Modular Storage System For Paraffin Block	58	Plastic spare handle	27
Modular Storage System For Slides	59	Plastic drawers for filing cabinet	58-59
Mono Cassette	13	Pre-filled containers	9
Mounting media	29	Protective biopsy pads	15
MSB Stain	47	Polylysine slides Menzel	26
Mucicarmine solution	33	Puchter Sirius red	33
Mucicarmine - Kit	47	Purified eosin alcoholic solution	30
N		R	
New methylene Blue	33	Red methyl solution	33
Neutral red solution	33	Red ponceau	33
Nigrosin solution for microbiology	33	Red thiazine concentrated	33
Nuclear fast red	33	RCD fast decalcifying solution	9
		RDM middle decalcifying solution	9
		RDO decalcifier for bone marrow biopsy	9
		RDP (Pasquini) for bone marrow biopsy	9
		RDF decalcifier with Fixative I^	9
O			
O.C.T. Compound	21		
Oil Red O - Kit	48		
OG6 polychromatic solution	35		

Analytics index

R	
RDL decalcifier with Fixative II [^] Slow action	9
RDB rapid decalcifier modified	9
Rhodamine modified MCF - Kit	51
S	
Sacomanno Fixative	34
Schiff Feulgen & Rossenbeck	33
Schiff reagent for aldehyde	33
Schiff reagent for histology	32
Schiffederdecker staining dish	28
Schiffederdecker staining dish made of glass	28
Schiffederdecker staining dish made of TPX	28
Securline Marker II	15
Shorr solution	35
Silver stain Gomori - Kit	50
Silver methenamine P.A.S.M - Kit	50
Sirius Red - Kit	51
Slide holder basket in stainless steel with a long handle	27
Solid green FCF solution	33
Solvents and dehydrating	12
Special Stain Kit	36-54
Spiral/spring spacer (filing cabinet)	59
Spray disinfectant for cryostat	21
Staining dish	27
Staining dish made of glass	27
Staining dish made in PMP	27
Staining solutions	31-34
Stains for Papanicolaou	34-35
Stainless Steel Knife	21
Static storage cabinet	60
Static storage cabinet (half capacity)	60
Storage	57
Structure with plans dishes without drawer	60
Substitute hydro alcoholic of Formalin	8
Sudan III saturated solution	35
Sudan Black saturated solution	35
Super mega cassettes	14
Super Pap Pen	15
T	
Tap for tank	
TC Knife Blade D profile Cm 12	21
Timolftaleine solution	33
Tincture mercuriothyolate	33
Tissue cassettes	13
Tissue marking dyes	16
Toluidina blue phenicated solution	33
Top cover (Filing Cabinet)	58
Tornasole tincture solution	33
Trimming Blade	20
V	
Van Gieson picro fuchsine	34
Van Gieson Trichrome - Kit	51
Verhoeff - Kit	52
Verheoff solution	34
Victoria blue solution	34
Von Kossa - Kit	52
W	
Warthin Starry - Kit	52
Wax paraffin	12
Weigert Hematoxylin	30
Weigert A Hematoxylin	30
Weigert B Hematoxylin	30
Weigert's fast method - Kit	53
Weigert's long method - Kit	52
Weigert resorcine rapid	34
Weigert - Van Gieson fast method - Kit	53
Weigert - Van Gieson long method - Kit	53
Wright's stain slow to Pearse	34
X	
Xylene	12
Xylene and substitutes	12
Z	
Zamboni fixative	8
Ziehl-Neelsen microscopy solution	34
Ziehl-Neelsen - Kit	54
Ziehl-Neelsen Fite - Kit	54

Histo-Line Laboratories

Via G. di Vittorio 30,
20090 Pantigliate (MI)
ITALY

Contacts



Phone: +39 0255230061



Customer and Order Management: +39 0255230061 (N° Internal 0)



Accounting: +39 0255230061 (N° Internal 1)



Commercial: +39 0255230061 (N° Internal 2)



Technical Products: +39 0255230061 (N° Internal 3)



Instruments Technical: +39 0255230061 (N° Internal 4)



Fax Administration, Commercial, Technical Support: +39 0255213764

For email contacts go to the website in "contacts" click "send email" fill the form and choose the reason for the request: technical, sales, support, request for price quotation. The service is available at work offices Italian hours Am 8:30-12:30 Pm 13:30-17:30.

Customers Area

In customer area log-in allows to consult operator manuals, product, technical data sheet and safety data sheet.

Mail

histoline@histoline.com

Web

www.histoline.com

Social



Histo-Line Laboratories

Viale G.di Vittorio, 30
20090 Pantigliate (MI)
ITALY

Tel. +39 0255230061

Fax +39 0255213764

<http://www.histoline.com>

email: histoline@histoline.com



Advancing Science & Medicine Through Histo-Cytology